



大埔浸信會社會服務處  
Tai Po Baptist Church Social Service

# 2024

## Annual Report 年報



## 目錄 Contents

2	機構簡介 About Us	50-57	總部 Head Office
3	主席的話 Message from the Chairman	58-59	主要服務項目一覽 List of Major Projects
4	總幹事的話 Message from the Director	60	財政報告 Financial Reports
5	業務總監的話 Message from Chief Business Officer	61-63	鳴謝 Acknowledgements
6	組織架構 Organizational Structure	64	捐款方法 Donation Methods
7	社會服務委員會及顧問 Social Service Committee and Advisors		
8	同工名錄 Staff Directory		
9	主要數據一覽 Key Facts		
10-20	本年動態 Highlights of the Year		
21-32	康復服務 Rehabilitation Service		
33-41	學校社會工作服務 School Social Work Service		
42-49	地區綜合服務 Community Integrated Service		

# 機構簡介

## About Us

### 大埔浸信會社會服務處

本處於 2003 年成立，我們有三大核心服務：學校社會工作服務、康復服務及地區綜合服務，每年服務超過 20 萬人次。

我們的項目涵蓋：全方位學生輔導服務、諮詢及督導服務、特殊教育需要 (SEN) 服務、幼稚園駐校社工服務、潛能發展、照顧者支援、專業訓練服務、長者項目、家庭發展空間、地區資源連結、義工動員連結等等。

機構以非牟利自負盈虧的方法運作，目的是以實踐基督的吩咐去服侍鄰舍，盡力滿足全港市民對社會服務的需要。

### Tai Po Baptist Church Social Service

Established in 2003, our organization focuses on three core services: school social work services, rehabilitation services, and community-integrated services. We serve over 200,000 individuals each year. Our programs cover a wide range of services, including:

- Comprehensive student counseling
- Consultation and supervision services
- Special educational needs (SEN) services
- Kindergarten-based social work
- Personal potential development
- Carer support
- Professional training
- Elderly projects
- Family development spaces
- Community resource network
- Volunteer mobilization and engagement

We operate as a non-profit, self-sustaining organization, with the mission of fulfilling Christ's command to serve our neighbors striving to meet the social service needs of the people across Hong Kong.

# 遠景

## Vision

本著基督之精神，體現傳道、教育與社會服務合一的卓越境界。

基於聖經教導，透過家庭服務及兒童教育來展示社會關懷和愛人如己的信仰基礎。

促進教會一家，善用社會資源，提升教會在社會關懷的創意與效能。

In the spirit of Christ, we strive to achieve excellence in preaching, education, and integrated social service.

We base on faith principles, demonstrate a foundation of social care and love for others through family services and children's education.

We promote unity in the church and leverage social resources to enhance the creativity and effectiveness of the church's social outreach.

# 使命

## Mission

聖經中記載「家庭」是神所創立的，是社會上最基本的群體單位，對培育個人的成長尤為重要。大埔浸信會社會服務處以「以人為本」的信念，提供各類型活動。

According to the Bible, families were created by God and are the most basic unit of society, crucial for fostering personal growth. The Tai Po Baptist Church Social Service is committed to a 'people-centered' approach providing various types of activities.

# 主席的話

## Message from the Chairman



曾家石先生  
Mr. Tsang Ka Shek  
主席  
Chairman

親愛的伙伴、同工及朋友們：

「我實在告訴你們，這些事，你們既做在我這弟兄中一個最小的身上，就是做在我身上了。」(馬太福音 25:40) 這段經文不僅是我們服務的根基，更是提醒我們所有服務和工作，都是回應基督的愛與呼召。過去一年，大埔浸信會社會服務處繼續以基督精神服務社區，推動家庭共融、支援弱勢群體，並致力創建一個更友善、更溫暖的社會。這份使命需要極大的耐性與堅持，但感謝主的帶領，讓我們在社區中見證了祂豐盛的恩典。

### 2024 年的感恩與成果

本年度，我們經歷了許多值得感恩的時刻：

- 本處的「幸福心房」基層家庭社區客廳服務 榮獲香港國際獅子總會頒發「全港十大優質社會服務獎」，這是對我們團隊努力的重要肯定。
- 我們獲香港提升快樂指數基金認證為「開心機構」，並簽署勞工處「好僱主約章 2024」，彰顯我們對員工福祉及快樂職場文化的重視。
- 在「愛·童心」賣旗籌款活動籌款超過 57 萬港元，超越往年記錄，這份支持讓我們能更靈活地回應社區的不同需要。
- 感謝利希慎基金及社創基金的支持，我們開展了第一個社企項目「ZebraGo 斑馬線」，將一輛 5.5 噸電動車設計成爲流動沉浸式全方位學習體驗車，為 SEN 學童提供適切的支援，幫助他們在成長路上走得更穩健。

### 感恩同行，展望未來

這一切成果，全賴合作團體、資助機構、專業伙伴及眾多善心人士的信任與支持。同時，我們衷心感謝各位委員的無私付出、義工們的熱心參與，以及同工們的专业與辛勞。你們的每一分努力，都在社區中播下愛的種子，讓更多人感受到關懷與希望。

願主繼續堅立我們手所作的工，讓我們的服務成爲祂的見證。願一切榮耀歸於主耶穌！

Dear Partners, Colleagues, and Friends,

*"Truly I tell you, whatever you did for one of the least of these brothers and sisters of mine, you did for me." (Matthew 25:40)*

This Scripture guides our service, reminding us that every act of kindness answers Christ's call. This past year, Tai Po Baptist Church Social Service has served our community in Christ's spirit - promoting family harmony, supporting the vulnerable, and building a more compassionate society. Though demanding, this mission has been blessed by God's grace.

### Gratitude and Achievements in 2024

This year has been marked by many milestones worth celebrating:

- Our **"Home Sweet Home" Household Development Project** was honored with the **"10 Outstanding Community Services Award"** by the Lions Clubs International (Hong Kong & Macau), a significant recognition of our team's dedication.
- We were certified as a **"Happy Organization"** by the Hong Kong Happiness Index Foundation and endorsed under the Labour Department's **"Good Employer Charter 2024,"** reflecting our commitment to employee well-being and a positive workplace culture.
- Through our **"Love for Children" Flag Day fundraiser**, we raised over **HK\$578,928**, surpassing previous records. This generous support enables us to respond more flexibly to the diverse needs of our community.
- Thanks to the funding from the **Lee Hysan Foundation and the Social Innovation and Entrepreneurship Development Fund**, we launched our first social enterprise initiative, **"ZebraGo"**, transforming a 5.5-ton electric vehicle into a **mobile immersive learning hub** to provide tailored support for **SEN children**, helping them thrive on their developmental journey.

### Gratitude and the Path Forward

These achievements reflect the trust and support of our partners, funders, and countless caring individuals. We thank our committee members for their dedication, volunteers for their passion, and staff for their tireless professionalism. Together, we sow seeds of love, bringing hope to those in need.

May the Lord bless our work as we serve in His grace. **To God be all the glory!**



# 總幹事的話

## Message from the Director



吳健文先生  
Mr. Ng Kin Man  
總幹事  
Director

### 扎根傳統 · 創新前行！

2024 年是大埔浸信會社會服務處充滿感恩與突破的一年。在這急速變化的時代，我們始終秉持基督的愛，以「創新」與「傳統」並行的精神，回應社會的需要，見證信仰的力量。

#### 創新與變革：回應時代挑戰

面對社會急速轉變，我們勇於突破框架，開拓嶄新服務模式。今年，我們推動了「跨代創科共融」，透過 AI 工具創造長者與青年連結的新契機，打破隔閡；同時，我們強化社區精神健康承托網絡，強化「幸福社區客廳」與信仰價值的結合，幫助基層家庭兒童照顧者賦能自立轉化。這些創新嘗試，正體現《以賽亞書》43:19 的提醒：「看哪，我要做一件新事。」

#### 持守傳統：信仰為本的服務根基

在變革中，我們亦堅守基督教服務的核心價值——愛與關懷。無論是基層家庭支援、長者關懷，還是兒童潛能發展，我們始終以聖經教導為根基，透過生命影響生命。例如，今年的「師友計劃」及「幸福校園計劃」結合信仰價值教育與專業服務，幫助許多學生和家庭重建關係和強化自我價值，見證了「基督化」服務的深遠影響。

#### 展望來年：更貼地的服侍

2025 年，我們將進一步深化社區營造、地區網絡連結、幸福校園和幸福社區的建構，針對照顧者壓力、兒童精神健康及基層家庭等議題，推出「社區客廳網點」及「流動照顧者會所」，實踐「愛鄰舍」的使命。我們也將加強與企業、社創界、基金會及學界的協作，讓服務更具影響力。

「我們行善，不可喪志；若不灰心，到了時候就要收成。」（加拉太書 6:9）願我們繼續以信心與行動，在傳統中創新，在變革中見證基督的愛，攜手迎接更豐盛的未來！

### Rooted in Tradition, Advancing with Innovation

The year 2024 has been one filled with gratitude and breakthroughs for the Tai Po Baptist Church Social Service. In these rapidly changing times, we continue to uphold Christ's love, embracing both *innovation* and *tradition* to meet social needs and bear witness to the power of faith.

#### Innovation and Transformation: Responding to the Challenges of the Times

Facing rapid societal shifts, we have boldly broken boundaries and pioneered new service models. This year, we launched *intergenerational tech-inclusion* projects, using AI tools to forge new opportunities for connection between the elderly and the youth, bridging the generational divide. At the same time, we enhanced mental wellness networks in the community and deepened the integration of our "Home Sweet Home" with faith-based values, empowering carers from underprivileged families to grow in self-reliance and transformation. These innovative efforts echo Isaiah 43:19—"See, I am doing a new thing."

#### Preserving Tradition: A Faith-Based Foundation of Service

Amidst changes, we remain anchored in the core Christian values of love and care. Whether supporting underprivileged families, caring for the elderly, or nurturing children's potential, our work is grounded in biblical teachings—transforming lives through lives. For instance, this year's *Mentorship Program* and *Happy Campus Initiative* combined faith-based education with professional services, helping students and families rebuild relationships and reinforce self-worth, demonstrating the lasting impact of "Christianized" services.

#### Looking Ahead: More Grounded Service in 2025

In the coming year, we aim to deepen community building, regional networking, and the development of happy campuses and communities. To address caregiver stress, children's mental health, and challenges faced by underprivileged families, we will roll out *Neighborhood Living Room Hubs* and a *Mobile Carer Lounge*, living out the mission to "love your neighbor." We will also strengthen collaboration with businesses, social innovation circles, foundations, and academia to enhance our impact.

"Let us not become weary of doing good, for at the proper time we will reap a harvest if we do not give up." —Galatians 6:9

May we continue to step forward in faith and action—*innovating within tradition and bearing witness to Christ's love through change*—as we work hand in hand toward a richer, more abundant future!

# 業務總監的話

## Message from the Chief Business Officer



羅碧君小姐  
Miss Chickita Law  
業務總監  
Chief Business Officer

### 2024 是充滿突破與故事的一年！

今年同事們在深耕服務的同時勇於創新，透過跨界合作提升效益，讓有需要者獲得更好支持，實踐「建構幸福社區」的使命。

#### 推動創新與創意

今年推出的電動共融車「ZebraGo 斑馬線」以社會企業模式運作，為偏遠地區 SEN 學童提供支援，展現我們效益與創新營運的決心。6 月舉辦的「愛·童心」賣旗日活動，我們用 AI 設計動物圖案，由 SEN 小朋友配字、邀請擁有三個 SEN 孩子的年青媽媽設計師排版設計，由同事投票選出貼紙，以科技節省籌款行政開支也為活動增添意義。全港首支狗狗賣旗義工隊的成立，推動人寵共融和寵物治療。

#### 促進跨界協作

我們重視照顧者及教師的身心健康，與企業、學校及教會合辦講座、社區客廳等活動，促進跨界協作。商界領袖亦參與機構員工培訓，義務分享管理及溝通經驗，助團隊成長。「義人同行計劃」培訓街坊義工的輔導與溝通技巧，凝聚社區力量。

#### 全方位共融實踐

我們擴大聘用非社福背景及 50+ 員工，推行家庭友善措施如帶子女及寵物上班，獲評「開心機構」殊榮。此外，與 CEO Global 及其他教育機構合作為大學生提供實習，幫助他們建立僕人領導思維、培育青年領袖對社會服務及 SEN 議題的認識。

展望將來與各界繼續攜手，透過資源共享與專業協作探索可持續的社區發展模式，共創社會影響力。

### 2024: A Year of Breakthroughs and Shared Growth!

2024 brought inspiring progress as we deepened services, embraced innovation, and strengthened collaborations to better support those in need—advancing our mission to "build a happy community."

#### Innovative Solutions

We launched **ZebraGo**, our first social enterprise initiative—an electric inclusive truck delivering services to SEN children in remote areas. Our **Love for Children** Flag Day combined AI-designed animal motifs with creative input from SEN children and a mother-designer, while staff-selected designs streamlined fundraising. Hong Kong's first dog volunteer team added warmth and pioneered pet therapy foundations.

#### Cross-Sector Impact

Prioritizing caregiver and teacher well-being, we partnered with funders, corporations, schools, and churches on mental health programs like seminars, community cafés, and mentorship. Leadership training for staff was enhanced by volunteer experts sharing project management and communication skills.

#### Inclusive Engagement

Through our **Walking with Volunteers** program, social workers train neighborhood volunteers to amplify community strength. We expanded hiring to non-social work backgrounds and those aged 50+, adopting family-friendly policies like bringing children/pets to work—earning recognition as a **Family-Friendly Employer** and **Happy Organization**.

#### Future Foundations

Internships for non-social work university students, in partnership with CEO Global, foster leadership and SEN awareness. We remain committed to sustainable, people-centered models.

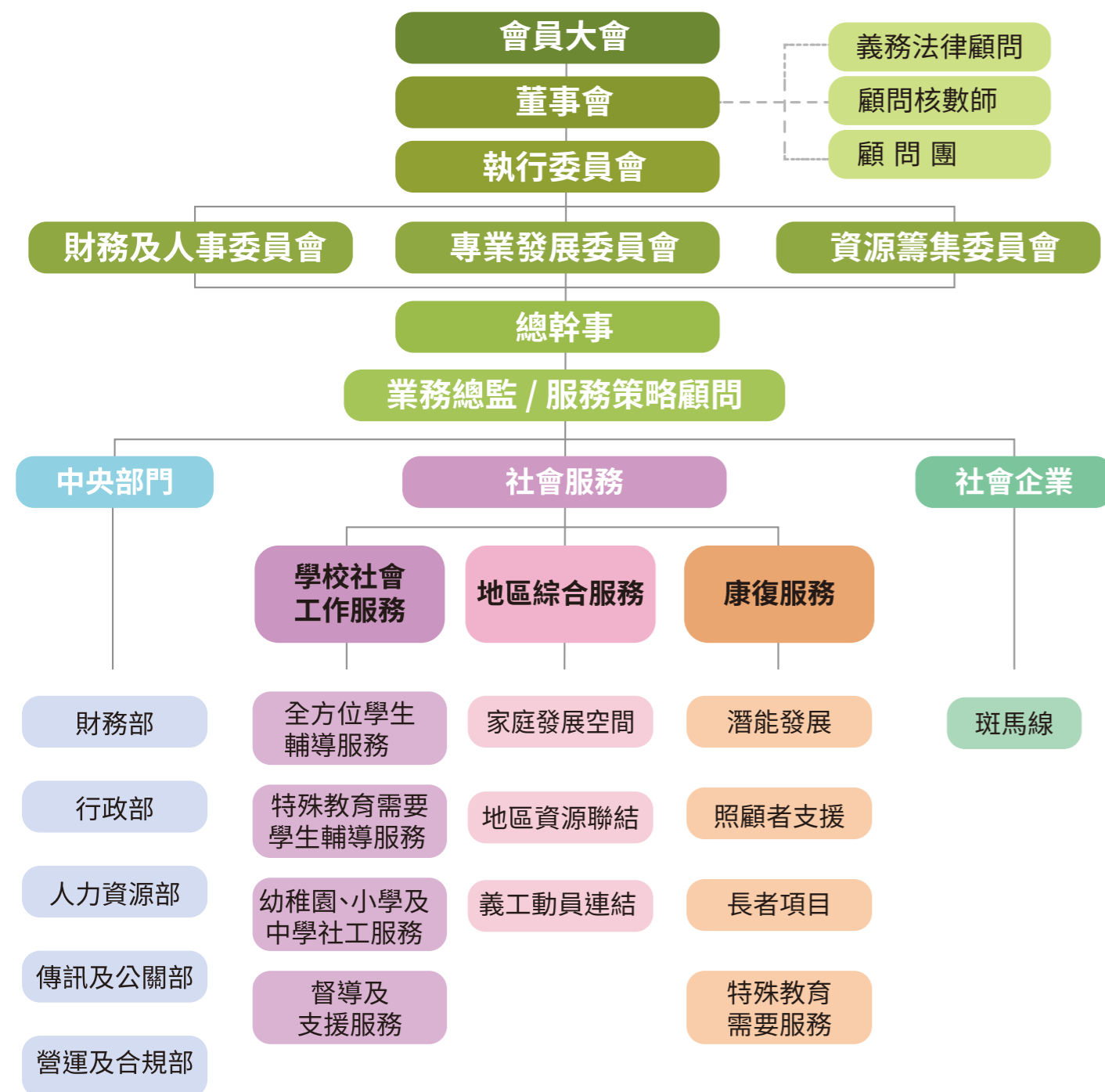
#### Join Us

True impact stems from shared vision. We invite businesses, peers, and foundations to collaborate in building harmonious communities. Together, let's nurture love and care.



# 組織架構

## Organizational Structure



# 社會服務委員會及顧問

## Social Service Committee and Advisors

### 大埔浸信會 Tai Po Baptist Church Social Service

#### 社會服務委員會委員 (2024 年度) Social Service Committee 2024

曾家石執事 (主席)	Mr. Tsang Ka Shek (Chairman)
譚日旭執事 (副主席)	Mr. Tam Yat Yuk (Vice Chairman)
劉竟成執事	Mr. Lau Daniel King Shing
陸麗珊執事	Miss Luk Lai Shan Chanel
周偉強牧師	Rev. Chau Wai Keung
馬煜東牧師	Rev. Ma Yuk Tung Daniel
陳思聰傳道	Mr. Chan Sze Chung
曾嘉豪傳道	Mr. Tsang Ka Ho Wilson
李德仁博士	Dr. Lee Tak Yan
張愛娥博士	Dr. Cheung Oi Ngor Sandra
廖玉儀女士	Miss Liu Yuk Yee
黃澤文先生	Mr. Wong Chak Man Eric
林偉安先生	Mr. Lam Wai On
梁雲岫女士	Miss Lindy Leung

### 大埔浸信會社會服務處

#### 義務法律顧問 Pro Bono Legal Advisor

林國興先生 (JP)	Mr. Lam Kwok Hing Wilfred
------------	---------------------------

#### 顧問核數師 Consulting Auditor

郭嘯南牧師	Rev. Dave Kwok Siu Nam
-------	------------------------

#### 機構顧問團 (2024 年度) Advisory Board (2024)

石丹理教授 (SBS, JP)	Prof. Shek T. L. Daniel (SBS, JP)
何建宗教授 (BBS, JP)	Prof. Ho Kin Chung (BBS, JP)
馬錦華先生 (MH, JP)	Mr. Timothy Ma (RSW, FCRP, MH, JP)
曾潔雯教授 (JP)	Prof. Sandra Tsang Kit Man (JP)
邱榮光博士 (JP)	Dr. Yau Wing Kwong (JP)
羅明輝博士	Dr. Law M. F. Ben
陳志峰教授	Prof. Chan Chi Fung Godfrey
冼權鋒教授 (MH)	Prof. Sin Kuen Fung Kenneth (MH)
陳兆東牧師	Mr. Chan Siu Tung
李子軒先生	Mr. James Lee
楊志達先生	Mr. Yeung Chi Tat Rex
呂昀俠博士	Dr. Lui Wan Hap
李詠嘉女士	Miss Lee Wing Ka
林詠儀女士	Miss Natalie Lam
洪暉女士	Miss Faye Hung
蕭穎女士	Miss Maggie Siu

# 同工名錄

## Staff Directory

部門	姓名	職位	職位	
總部	吳健文	Ng Kin Man	總幹事	
	羅碧君	Law Bik Kwan	業務總監	
	譚仲凱	Tam Chung Hoi	服務策略顧問	
	關文華	Kwan Man Wa	服務發展幹事	
	勞志立	Lo Chi Lap	營運及合規經理	
	楊至廉	Yeung Chi Lim	傳訊及活動經理	
	梁麗芬	Leung Lai Fan	會計主任	
	陳子謙	Chan Tsz Him	人力資源主任	
	劉月	Lau Yuet	行政主任	
	黃穎桐	Wong Wing Tung	會計助理	
	鄺明慧	Kwong Ming Wai	傳訊及公關主任	
	地區綜合服務	陳以昕	Chan Yi Yan	總主任(地區綜合服務)
		侯翠華	Hau Chui Wah	副總主任(地區綜合服務)
謝敏婷		Tse Man Ting	社工	
周晴鏞		Chow Ching Shan	高級服務幹事	
吳翠儀		Ng Chui Yee	行政助理	
康復服務	楊慕瑛	Yeung Mo Ying	總主任(康復服務)	
	葉希敏	Ip Hei Man	副總主任(康復服務)	
	王美儀	Wong Mei Yee	業務經理	
	鍾智華	Chung Chi Wa	社工	
	黃慶烈	Wong Hing Lit	社工	
	蘇佩琳	So Pui Lam	高級服務幹事	
	郭劭晞	Kwok Siu Hei	社區工作幹事	
	楊瑋怡	Yeung Wai Yi	行政主任	
	林朗庭	Lam Long Ting	高級服務幹事	
	學校社會工作服務	梁洪偉	Leung Hung Way	總主任(學校社會工作服務)
林卓鴻		Lam Cheuk Hung	高級副總主任(學校社會工作服務)	
何顯榮		Hoh Hin Wing	督導	
歐陽新群		Au Yeung San Kwan	督導	
趙若華		Chiu Yeuk Wah	督導	
吳君慧		Ng Kwan Wai	督導	
曾遠香		Tsang Yuen Heung	督導	
李潔露		Lee Kit Lo	督導	
潘達		Poon Tat	社工	
王嘉怡		Wong Ka Yee	行政主任	
段君朗		Tuan Chun Lan	中學駐校社工	
羅頌玲		Law Chung Ling	小學駐校社工	
關浩然		Kwan Ho Yin	小學駐校社工	
歐陽曦		Au Yeung Hei	小學駐校社工	
陳錦國		Chan Kam Kwok	小學駐校社工	
李嘉寶		Lee Ka Po	小學駐校社工	
譚妃		Tan Fei	小學駐校社工	
譚婷婷		Tan Tingting	小學駐校社工	
曾梓恩		Tsang Tsz Yan	小學駐校社工	
陳瑋茵		Chan Wai Yan	小學駐校社工	
曾敏軍		Tsang Man Kwan	小學駐校社工	
林葵惠		Lam Yau Wai	小學駐校社工	
黃文瀚		Wong Man Hon	小學駐校社工	
周靜雅		Chow Ching Nga	小學駐校輔導員	
楊鈺瑩		Yeung On Ying	小學駐校社工	
李秉輝		Li Ping Fai	小學駐校社工	
朱朗輝		Chu Long Fai	小學駐校社工	
梁子冠		Leung Tsz Kwun	小學駐校社工	
黃宗盛		Wong Chung Shing	幼稚園駐校社工	
梁嘉怡		Leung Ka Yi	小學駐校社工	
吳本為		Ng Pun Wai	小學駐校社工	
謝翊晴		Tse Yik Ching	小學駐校社工	
李曉娟		Li Hiu Kuen	小學駐校社工	
黃永康	Wong Wing Hong	小學駐校社工		
李玉翠	Lie Yuk Chui	小學駐校社工		
張芷彤	Cheung Tsz Tung	小學駐校社工		
黃兆璋	Wong Siu Cheung	小學駐校社工		
陳鈺瑜	Chan Yuk Yu	小學駐校輔導員		
林朗熙	Lam Long Hei	小學駐校社工		
陳舒婷	Chan Shu Ting	幼稚園駐校社工		
關玉君	Kwan Yuk Kwan	幼稚園駐校社工		
總部	Director		Director	
	Chief Business Officer		Chief Business Officer	
	Service Strategy Advisor		Service Strategy Advisor	
	Service Development Officer		Service Development Officer	
	Operations and Compliance Manager		Operations and Compliance Manager	
	Communications Manager		Communications Manager	
	Financial Executive		Financial Executive	
	Human Resource Executive		Human Resource Executive	
	Administrative Executive		Administrative Executive	
	Account Assistant		Account Assistant	
	Communications Executive		Communications Executive	
	地區綜合服務	Head of Community Integrated Service		Head of Community Integrated Service
		Deputy Head of Community Intergrated Service		Deputy Head of Community Intergrated Service
Social Worker			Social Worker	
Senior Service Officer			Senior Service Officer	
康復服務	Administration Assistant		Administration Assistant	
	Head of Rehabilitation Service		Head of Rehabilitation Service	
學校社會工作服務	Deputy Head of Rehabilitation Service		Deputy Head of Rehabilitation Service	
	Business Manager		Business Manager	
	Social Worker		Social Worker	
	Social Worker		Social Worker	
	Senior Service Officer		Senior Service Officer	
	Community Work Officer		Community Work Officer	
	Administrative Executive		Administrative Executive	
	Senior Service Officer		Senior Service Officer	
	學校社會工作服務	Head of School Social Work Service		Head of School Social Work Service
		Senior Deputy Head of School Social Work Service		Senior Deputy Head of School Social Work Service
		Supervisor		Supervisor
		Supervisor		Supervisor
		Supervisor		Supervisor
Supervisor			Supervisor	
Supervisor			Supervisor	
Supervisor			Supervisor	
Social Worker			Social Worker	
Administrative Executive			Administrative Executive	
School Social Worker			School Social Worker	
School Social Worker			School Social Worker	
School Social Worker			School Social Worker	
School Social Worker			School Social Worker	
School Social Worker			School Social Worker	
School Social Worker			School Social Worker	
School Social Worker			School Social Worker	
School Social Worker			School Social Worker	
School Social Worker			School Social Worker	
School Social Worker			School Social Worker	
School Social Worker			School Social Worker	
School Social Worker			School Social Worker	
School Social Worker			School Social Worker	
School Social Worker			School Social Worker	
School Social Worker			School Social Worker	
School Social Worker			School Social Worker	
School Social Worker			School Social Worker	
School Social Worker			School Social Worker	
School Social Worker			School Social Worker	
School Social Worker			School Social Worker	
School Social Worker			School Social Worker	
School Social Worker			School Social Worker	
School Social Worker			School Social Worker	
School Social Worker		School Social Worker		
School Social Worker		School Social Worker		
School Social Worker		School Social Worker		
School Social Worker		School Social Worker		
School Social Worker		School Social Worker		
School Social Worker		School Social Worker		
School Social Worker		School Social Worker		
School Social Worker		School Social Worker		
School Student Counsellor		School Student Counsellor		
School Social Worker		School Social Worker		
Kindergarten Social Worker		Kindergarten Social Worker		
Kindergarten Social Worker		Kindergarten Social Worker		

# 主要數據一覽

## Key Facts

本處共有三大服務單位，2024 年共服務 207,404 人次，在 2024 年 9 月份，本處共有 66 位全職及兼職同工，其中 53 位是註冊社工及輔導員。營運 11 個基金計劃項目，並為 28 間學校提供駐校社工服務。

其中康復服務服務人次 33,033 次、地區綜合服務服務人次 47,563 次，以及學校社會工作服務服務人次 71,260 次。

今年有多項籌款活動，包括 6 月 22 日的愛·童心賣旗，籌得款項 57 萬元。

本處擔任照顧者易達平台 (Carer EPS) 第一召集人兼秘書處，致力推動照顧者福利及照顧者服務，與商界拓展合作。

今年亦推出本處首個社企 ZebraGo 斑馬線，全港首部以 5.5 噸環保電動貨車改裝之多功能全方位學習車，為偏遠地區學生提供沉浸體驗及治療服務。

Our organization is comprised of three main service units, providing services to 207,404 service visits throughout 2024. As of September 2024, we had 66 full-time and part-time staff members, including 53 registered social workers and counselors. We operated 11 funded projects and provided on-campus social work services to 28 schools.

In terms of service reach:

- Rehabilitation services served 33,033 service visits.
- Community integrated services provided services to 47,563 service visits.
- School social work services supported 71,260 service visits.

### Fundraising Activities

Several fundraising initiatives took place this year, including:

- The Love for Children Flag Day on June 22, raising 570,000 HKD.
- The SuperRun Family Orienteering Fundraiser on January 1, 2025 (to be reported).

### Advocacy & New Initiatives

Our organization served as the Chief Convenor and Secretariat of the Carer EPS, focusing on carer welfare and services while expanding corporate collaborations.

We also launched our first social enterprise, ZebraGo, introducing Hong Kong's first 5.5-ton eco-friendly electric truck, providing immersive experiences and therapeutic services for students in remote areas.

全年總收入 Total Annual Revenue	<b>\$24,373,047 HKD</b>	
全年總支持 Total Annual Support	<b>\$23,608,334 HKD</b>	
年度營運盈餘 Annual Operating Surplus	<b>\$764,713 HKD</b>	

全職及兼職同事 Full-time and Part-time Staff	<b>66</b>
全年總服務人次 Total Annual Service Visits	<b>207,314</b>
基金計劃項目 Funded Projects	<b>11</b>
駐校社工服務學校 Schools Using School-based Social Work Services	<b>28</b>



# 本年動態

## Highlights of the Year



### 幸福社區 Happy Community

本年年報以「幸福社區」為主題，彰顯本機構積極回應社會需求的承諾。面對全球經濟波動與本地社會轉型的雙重挑戰，本處主動配合特區政府的民生政策，通過優化心理健康服務、強化社區支援網路等創新舉措，與市民攜手共建抗逆力。我們深信，通過專業服務的持續深化與社會各界的通力合作，能夠共同促進社區福祉，構築更具韌性的幸福家園。

This year's annual report adopts the theme of "Happy Community," highlighting our organization's commitment to addressing societal needs. Amid global economic uncertainties and local social challenges, we have actively aligned our services with the government's well-being initiatives. By enhancing mental health support, strengthening community networks, and introducing innovative programs, we strive to foster resilience and collective well-being. Together with the community, we are building a stronger, more supportive society where happiness and solidarity can thrive.



### 世界衛生組織幸福指數 (WHO-5) World Health Organization Well-Being Index (WHO-5)

WHO-5 (World Health Organization Well-Being Index) 是世界衛生組織開發的簡易量表，用於快速評估受測者的主觀心理健康狀態與幸福感，常被用於臨床、社區或研究中篩檢情緒困擾（如憂鬱傾向）或追蹤介入效果。

The WHO-5 is a short questionnaire developed by the World Health Organization to quickly assess an individual's subjective psychological well-being and sense of happiness. It is often used in clinical settings, community screenings, or research to identify emotional distress (such as depressive tendencies) or to monitor the effectiveness of interventions.

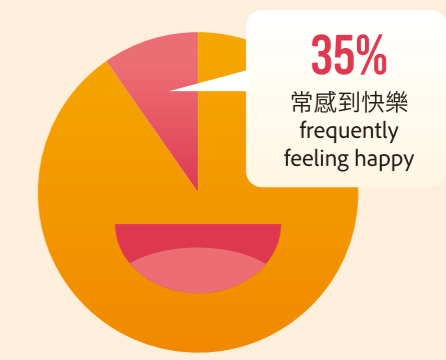
- **量表內容 Scale Details**  
題數: 5 題，每題評估「過去兩週」的正向感受頻率。  
Items: 5 questions, each measuring the frequency of positive feelings experienced over the past two weeks.
- **評分方式 Scoring**  
每題按程度分為 6 級 (0~5 分)，總分範圍 0~25 分，分數越高代表幸福感越強。  
Each item is rated on a 6-point scale (0 to 5). The total score ranges from 0 to 25, with higher scores indicating greater well-being.
- **題目範例 (節錄) Sample Items (excerpt)**
  - 我感到心情愉快、放鬆。  
I felt cheerful and relaxed.
  - 我感到平靜、安定。  
I felt calm and secure.
  - 我感到精力充沛。  
I felt full of energy.
  - 我醒來時感到清新、休息充足。  
I woke up feeling fresh and rested.
  - 我對日常生活充滿興趣。  
I felt interested in my daily life.

- **國際報告中的香港排名  
Hong Kong's Ranking in Global Reports**
- 2024 年聯合國《世界幸福報告》(World Happiness Report) 中，香港在 147 個國家 / 地區中排名第 88 位。
- In the 2024 edition of the UN's World Happiness Report, Hong Kong ranked 88th out of 147 countries/regions.



- **香港表現 Hong Kong's Performance:**
- **優勢:** 人均 GDP、健康壽命較高。
- **劣勢:** 社會支持度低、貪腐感知負面、生活壓力大 (如住房、工時)。
- 僅 35% 香港受訪者表示「常感到快樂」，低於全球平均 (52%)。負面情緒 (壓力、憂慮) 比例高於東亞平均值。(0~5 分)，總分範圍 0~25 分，分數越高代表幸福感越強。
- **Strengths:** High GDP per capita and long life expectancy
- **Weaknesses:** Low social support, negative perception of corruption, and high stress from issues like housing and long work hours
- Only 35% of Hong Kong respondents reported "frequently feeling happy," compared to the global average of 52%
- Rates of negative emotions (e.g. stress, anxiety) are higher than the East Asian average

**評估指標 Evaluation Criteria**  
人均 GDP、社會支持、健康預期壽命、自由選擇、慷慨度、貪腐感知。  
GDP per capita, Social support, Healthy life expectancy, Freedom to make life choices, Generosity, Perceptions of corruption.





# 「幸福心房」獲獎 「香港十大優質社會服務計劃」

## “Home Sweet Home” Household Development Project Wins Hong Kong’s 10 Outstanding Community Services Award

我們由社區投資共享基金 (CIIF) 所資助的「幸福心房」社區客廳服務，獲國際獅子總會評選為香港十大優質社會服務計劃之一！

「幸福心房」計劃在社區推行，以「社、校、醫、商」協作模式，透過「發展空間」、「親子關係」及「社區資源」介入點，提升「不適切居所」家庭之幸福感。

Our community household development initiative, “Home Sweet Home” wins Hong Kong’s 10 Outstanding Community Services Award. This project is funded by the Community Investment and Inclusion Fund (CIIF), has been recognized as one of Hong Kong’s Top Social Service Projects by Lions Clubs International!

The project operates in a collaborative model that engages schools, church, businesses, medicare and community. Through interventions in living spaces, parent-child relationships, and community resources, the initiative seeks to enhance the overall well-being of families living in substandard housing.

### 社會效益 Social Impact

- 連結及凝聚區內基層家庭，建立鄰里支援網絡。
- 推動基層家長參與社區，建立家長互助網絡。
- 發揮不同協作夥伴的強項，共同持續回應基層家庭的需要。
- Connecting and uniting underprivileged families to build a neighborhood support network.
- Encouraging parent participation to establish a mutual assistance system within the community.
- Leveraging the strengths of various partners to continuously address the needs of underprivileged families.



### Honored Among Hong Kong’s Leading Social Service Initiatives

Organized by Lions Clubs International District 303 (China, Hong Kong, and Macau), the Top 10 Quality Social Service Projects Election is now in its sixth intake. The goal of this award is to identify outstanding social initiatives, foster collaboration among organizations, and create synergy where “one plus one is greater than two,” ultimately benefiting a broader community.

The award ceremony took place on June 14, 2024, at the Nina Hotel, Tsuen Wan, recognizing ten exceptional service projects that have received public acclaim for their impact on society and local communities.

We are deeply honored to receive this prestigious award and sincerely thank all industry peers, community members, partners, and beneficiaries for their support and recognition. This achievement motivates us to expand the program to reach more individuals in need, ensuring that even more families can benefit from meaningful community-driven initiatives.



由國際獅子總會中國港澳 303 區（獅子會）主辦的「香港十大優質社會服務計劃選舉」已舉辦至第六屆，目的透過此選舉，找到更多的同行者、發掘優質的合作夥伴，形成凝聚力，發揮「一加一大於二」的效果，讓社會上更多群體受惠。

第六屆「香港十大優質社會服務計劃選舉」頒獎典禮於 2024 年 6 月 14 日假荃灣如心酒店舉行，活動表揚獲得公眾肯定的 10 項優秀服務計劃，且對社會及地區作出突出貢獻之得獎服務機構及單位。我們榮獲此獎，深感榮幸，感謝各同業、社會人士、協作夥伴、服務對象的支持和肯定，會更加努力讓此服務推廣至更多有需要群體。

# 社聯會議暨香港社會服務巡禮 S+ 展覽

## S+ Summit cum Expo

### S+ 高峰暨博覽會

社聯主辦的 S+ 博覽會，是社工界的年度盛事，分兩天舉行，頭一天論壇部分供同業彼此交流經驗，互道家常的時間，而第二天博覽會則是各機構展示服務，互相觀摩的機會。多年下來，博覽會吸引的不止是社福界，更是關心社會發展的人士，觀察社會演變的窗口。可以透過博覽會看到前線社工在幹什麼、慈善基金的關注、以及社會關注的議題。

今年 S+ 博覽會在 2024 年 5 月 2-3 日舉行，本機構全力支持，除了擺展外，亦發動全體同事觀展，並就觀展心得在內部分享，以提取同行經驗。而我們的展位以兩個服務為主題，包括照顧者 ACT (Ability, Career, Talent)，和 ZebraGo 斑馬線，後者算是首度公開亮相，把我們的理念和服務，展示在公眾面前。

整個展位以星空為背景，突出星星 SEN 的主題，而穹蒼下的營火，提供給 SEN 照顧者溫暖和力量，當天更請到我們的照顧者現場展示活動及分享體會。

當天有大量同業、持分者、社會人士等等到我們展位參觀交流，除展示自身外，亦看看各同業最新的服務和創新，提升自己在業內的認識，收穫滿滿。



### S+ Summit cum Expo

Organized by the Hong Kong Council of Social Service, the S+ Expo is a major annual event in the social work sector. Spanning two days, the first day is dedicated to forums where professionals exchange experiences and engage in informal discussions. The second day focuses on exhibitions, allowing organizations to showcase their services and learn from one another. Over the years, the expo has attracted not only social welfare professionals but also individuals interested in societal development, serving as a window into social changes. Through the event, attendees gain insights into frontline social work, charitable fund priorities, and pressing social issues.

This year, the S+ Expo took place on May 2-3, 2024, and our organization participated wholeheartedly. In addition to setting up an exhibition booth, we encouraged all staff to attend and later share their observations internally, fostering collective learning within the sector. Our booth centered around two key services: Carer ACT (Ability, Career, Talent) and ZebraGo, the latter making its public debut by presenting our vision and services to the wider community.

The booth featured a starry sky theme, highlighting the significance of SEN (Special Educational Needs). Beneath the celestial canopy, a campfire symbolized warmth and strength for carers. On the event day, our carers engaged in live demonstrations and shared personal experiences.

A diverse audience, including industry peers, stakeholders, and community members, visited our booth to exchange ideas. Beyond showcasing our services, we explored innovative programs from fellow organizations, broadening our understanding and enriching our professional expertise. The event proved to be an invaluable learning experience for all.







# 點亮啟航禮 —— 獎學金頒授儀式暨師友計劃啟動禮

## "Illuminating Extraordinary Talent Scholarship" Award Ceremony & Mentorship Program Launch

The first "Illuminating Extraordinary Talent Scholarship" was successfully awarded on June 8, celebrating the achievements of 10 underprivileged senior primary students with Special Educational Needs (SEN). The ceremony also marked the official launch of a mentorship program, providing continuous support and guidance for these students.

During the event, Dr. Choi Yuk Lin, Secretary for Education, emphasized the government's commitment to special education, praising the scholarship program for recognizing and nurturing the potential of SEN students. She expressed hope that the initiative would expand, creating more opportunities for students in need.

### Program Overview & Funding Support

The program is led by Tai Po Baptist Social Service, with Dreams Come True Foundation and Rotary Club of Islands as financial sponsors. It aims to help SEN students from underprivileged backgrounds develop their talents in science, sports, music, and arts, while offering holistic support through mentorship.

Over 60 schools participated in the nomination process, with more than 150 students proposed. Ultimately, 10 students were selected, each receiving a HK\$10,000 scholarship, while 19 other students were awarded "Outstanding Performance Certificates".

Among the nominated students:

- Nearly half have Attention Deficit Hyperactivity Disorder (ADHD)
- 40% face learning difficulties, autism, or speech disorders
- 15% have multiple SEN conditions

Despite their challenges, these students have displayed remarkable potential, deserving strong support and opportunities from society.

### Mentorship Program & Talent Showcase

Alongside the scholarship awards, the mentorship program was successfully launched, providing academic guidance, extracurricular activities, and career planning. Support is provided by Rotary Club of Islands, Rotary Club of Tai Po, K. Tree Sports & Arts Association, and Hong Kong Special Needs Sports Institute.

A talent mini exhibition was also held, where scholarship recipients demonstrated their skills in science, sports, music, and arts, leaving a profound impression on guests and educators.

### Acknowledgments

Special appreciation goes to Sitoy Group, Sunshine Lighting Ltd., and OKI Media for their sponsorship, which enriched the event and enhanced its impact.

This initiative truly highlights the power of education in transforming lives.

第一屆「點亮飛凡獎學金」在6月8日圓滿頒發，當日典禮上頒發獎學金予10名基層高小特殊教育需要學童，同時啟動配套的師友計劃，為他們提供持續支持和輔導，當日既是頒授禮，亦是啟航禮。

主禮嘉賓之一的教育局局長蔡若蓮博士致辭時表示，政府高度重視特殊教育，並讚揚「點亮飛凡獎學金計劃」能發掘這些學生的潛能，期望計劃能持續推廣，為更多有需要的學童創造發展機會。

計劃由大埔浸信會社會服務處統籌，並獲得**夢想成真基金會**及**離島扶輪社**的資金支持。計劃旨在讓有特殊教育需要的基層學童，在科學、體育、音樂和藝術等範疇發展潛能，並透過師友配對，提供全面支援。

是次計劃獲超過60間學校支持，提名超過150位學生，最終有10名學生脫穎而出，各獲一萬港元獎學金，另外19名學生獲頒「飛凡表現嘉許狀」。

獲提名的學生中，近半有專注力不足或過度活躍症，四成有特殊學習困難、自閉症或言語障礙，還有一成半有多重特殊教育需要。儘管他們面對重重障礙，但仍展現出無窮潛能，值得社會給予支持和機會。

除頒發獎學金外，師友計劃亦已順利啟動。計劃透過師友配對，為學童提供學習輔導、課餘活動、生涯規劃等全方位支援，由**離島扶輪社**、**大埔扶輪社**、**啟槌體藝協會**及**香港特殊需要體育學院**共同協助支持。

頒獎禮當日亦安排了潛能展示環節，讓得獎學童展示在科學、體育、音樂和藝術等方面的才能，令現場來賓及師長們都深感教育成果之美。

也特別鳴謝**時代集團**、**陽光照明有限公司**及**傲騏媒體**的贊助支持，令活動生色不少！

出席人數  
Attendees

150+

出席嘉賓  
VIP

20+

參加學校  
Nominating schools

60+

提名人數  
Norminees

150+

獲獎學生  
Awarded students

10

頒發嘉許狀  
Awarded Certificates of Commendation

19

總獎學金  
Total scholarship

100,000HKD

攜手扶弱基金 Partnership Fund for the Disadvantaged × 啟槌體藝協會 K. Tree (SEN) Sports And Arts Association

# 飛凡兒童計劃 SEN's Got Talent!

飛凡兒童計劃在2024年中結束，並舉行了畢業禮暨成果展示日，讓家長們看見孩子們的潛能和努力。

當天禮堂及攤位座無虛席，經過一年努力學習的兒童在大家的掌聲見證下展現出他們潛能及成果，而參加靜態活動如黏土及3D筆的學生，亦展現他們領導才能，看守攤位，向各位來賓展示介紹他們所學到的藝術知識。

除了表演之外，亦安排了畢業典禮肯定他們過去付出。家長來賓都印象深刻，感動孩子們的成就和成長。

每個孩子都有獨特的天賦，只要給予適當的引導和機會，他們都能發光發熱！

飛凡兒童計劃是透過科、音、體及藝四方面，強調軟技能的培訓，發掘 SEN 兒童的潛能，向其家人及社區人士展現他們學術以外的非凡表現，肯定其能力。讓 SEN 兒童重拾自信心，另一方面著力改變社會對 SEN 兒童的負面標籤。

此外，本計劃惠及 SEN 兒童的照顧者，透過提供照顧者工作坊，讓照顧者尋回自己的興趣，發掘潛能，同時讓照顧者享受 ME TIME，紓緩照顧壓力。



The SEN's Got Talent! Program concluded in mid-2024 with a graduation ceremony and achievement exhibition day, allowing parents to witness their children's potential and hard work.

The venue and exhibition booths were packed that day. After a year of dedicated learning, the children showcased their talents and accomplishments to thunderous applause. Students who participated in static activities, such as clay modeling and 3D pen art, also demonstrated leadership skills by managing their booths and explaining their artistic knowledge to guests.

In addition to the performances, a graduation ceremony was held to recognize their efforts and progress. Parents and guests were deeply impressed and moved by the children's achievements and growth.

Every child got talents—with the right guidance and opportunities, they can all shine brightly!

The program emphasizes soft skills training across four areas: science, music, physical education, and the arts. It aims to uncover the potential of students with Special Educational Needs (SEN) and showcase their exceptional achievements beyond academics to their families and community members, thereby affirming their abilities. This initiative not only helps SEN children regain their confidence but also seeks to shift societal perceptions and reduce negative stereotypes associated with them.

Additionally, the program benefits the carers of SEN children by offering workshops that allow them to rediscover their interests and explore their potential. This initiative also provides carers with valuable "me time," helping to alleviate caregiving stress.





# ZebraGo 斑馬線啓動禮

## ZebraGo Launching Ceremony



我們首個社會企業項目 **ZebraGo 斑馬線**，於 2024 年 7 月 6 日舉行了啟動禮暨教育界優先體驗場活動，當日吸引了超過 100 位來自社會福利、教育、商業、基金及學校家長學生等人士出席支持。

**ZebraGo 斑馬線**為 2023 年度社創基金最高撥款項目之一，「利希慎基金」作為策略伙伴及贊助，「社創基金」提供撥款資助，並獲「創新園」的培育及支援。主要為特殊教育需要 SEN 學童提供到校共融體驗服務。這是全港首輛 5.5 噸電動社會服務和教育服務流動車，旨在回應特殊教育需要 (SEN) 學童在校適應和照顧者支援的需要，同時減少因為地域限制而影響他們獲得專業訓練的機會。

### 社會創新 填補需要 開拓可能 業界肯定

「流動式教育及社會服務是一種嶄新嘗試，正好填補新界區的需要。」社會福利署大埔及北區福利專員馮曼瑜女士為大會致辭指出：「新界北區有大量基層人口，對 SEN 兒童教育及社會服務需求殷切，期望流動式服務可填補這個不足。」

一直大力支持 SEN 學童服務的利希慎基金是本計劃的出資人之一，基金項目總監劉珊珊女士在會上分享道：「基金於 2014 年資助「幼稚園有特殊需要學童的早期介入和綜合支援計劃」，起初只有 10 所幼稚園、60 位 SEN 同學，後來政府把計劃納入常規，到 22-23 年度的撥款已達 3.7 億，期望透過本次計劃，基金亦能把 SEN 服務工作進一步拓展，將服務延伸到小學校園，別具意義。」

是次活動反應熱烈，出席嘉賓踴躍登上「ZebraGo 斑馬線」，來賓雲集齊為我們打氣，上車體驗者甚為踴躍，當日有 6 間學校簽署合作協議，反應熱烈，期望下半年展開服務後能在未來進入更多小學校園，發揮更大的影響力，共建共融和諧社會。

Our first social enterprise project, ZebraGo, held its launch event and exclusive educational experience on July 6, 2024. The event was attended by over 100 guests, including representatives from social welfare, education, business, foundations, and school communities.

ZebraGo is among the top-funded projects of the Social Innovation Fund (2023), with Lee Hysan Foundation as a strategic partner and sponsor, Social Innovation Fund providing financial support, and InnoPark offering incubation and assistance. The initiative focuses on providing inclusive, on-campus experiences for students with Special Educational Needs (SEN). It is Hong Kong's first 5.5-ton electric mobile education and social service vehicle, designed to support SEN students' school adaptation and caregiver assistance, while addressing geographical barriers that limit access to professional training.

### Social Innovation | Addressing Needs | Unlocking Possibilities | Industry Recognition

During the launch event, Ms. Fung Man Yu, Social Welfare Officer of Tai Po & Northern District, emphasized:

*"Mobile education and social services are a pioneering approach, directly addressing the urgent needs in the New Territories. Many grassroots families in the Northern District require strong support for SEN education and social services, and we hope this initiative can fill the gap."*

Having long supported SEN student services, Lee Hysan Foundation is a key funder of the project. Project Director Ms. Liu Shan Shan shared:

*"In 2014, our foundation supported the Early Intervention and Integrated Support Program for SEN children in kindergartens, initially benefiting only 10 schools and 60 students. Over time, the government incorporated it into its regular programs, and by the 2022-23 fiscal year, funding reached HK\$370 million. Through ZebraGo, we aim to expand SEN services into primary schools, making an even greater impact."*

The event was met with enthusiastic participation, with guests exploring ZebraGo, interacting with service providers and caregivers, six schools signed cooperation agreements on the day. As the service officially launches later this year, stakeholders look forward to extending its reach to more primary schools, contributing to a more inclusive and harmonious society.



# 「邁埔向前、童夢同行」師友計劃結業禮

## "Move Forward with a Dream: Mentorship Program" Graduation Ceremony



由兒童發展基金 (CDF) 資助、為期三年的師友計劃於 2024 年 9 月 14 日舉行結業禮暨成果展示禮，活動上感動場面不斷，無論嘉賓、導師、學生、家長、社工、工作人員都對活動成果表示讚嘆，愛和恩典充滿其中！

2021-2024 年實行、名為「邁埔向前、童夢同行」的師友計劃結業禮，由大埔浸信會社會服務處的地區綜合服務團隊統籌，將計劃裏 50 位高小學生生命的轉化、師友與學生家長的關係、師友的轉化等都一一以詩歌敬拜和分享呈現，這是一個實實在在的孩子成長歷程見證會，在場的嘉賓、同事都深深被打動和感動。上帝藉著堂校社合一的聯乘，讓幸福流動起來！衷心感謝團隊心思細密的籌備和安排，讓本處有溫度的服務特色再次得以展現！求主親自賞賜每一位用心的服侍，繼續帶領我們開展 2.0 的師友計劃生命工程，祝福下一屆 60 個學生家庭得著其中。

The three-year mentorship program, funded by the Children Development Fund (CDF), held its graduation ceremony on September 14, 2024. The event was filled with touching moments, with guests, mentors, students, parents, and social workers all expressing admiration for the program's achievements. Love and grace were pervasive throughout!

The program, titled "Move Forward with a Dream: Mentorship Program," ran from 2021 to 2024 and was coordinated by the Integrated Community Services Team of the Tai Po Baptist Church Social Services. It showcased the transformation of 50 primary school students, the relationships between mentors and parents, and the growth of mentors themselves, all presented through songs of worship and sharing. This was a genuine testimony of children's growth, deeply moving all attendees.

Through the unity of the church, school and social service, God allowed happiness to flow! We sincerely thank the team for their meticulous planning and arrangements, which highlighted the warmth of our services once again. We pray that the Lord rewards every dedicated effort and continues to guide us in launching the 2.0 mentorship program, blessing the next cohort of 60 student families.





# 照顧者友善商戶嘉許禮

## Carer-Friendly Business Recognition Ceremony



照顧者易達平台由 16 間社福機構組成，本處出任第一召集人及秘書處，攜手回應國際照顧者月和施政報告支援照顧者。

於 10 月 24 日舉行了「『友里』照顧您·照顧者友善商戶嘉許禮」表揚過去支持照顧者的商戶及團體為照顧者提供各類折扣優惠。

嘉許禮接近 100 人出席，邀請到勞工及福利局副局長何啟明先生 JP、立法會議員（社會福利界）狄志遠議員 SBS,JP、立法會議員（新界東南）林素蔚議員、大灣區香港女企業家總會副主席黃林趣玲女士和聖方濟各大學湯羅鳳賢社會科學院研究教授莊明蓮教授擔任主禮嘉賓，及所有成員機構總幹事出席。嘉賓們分別嘉許了在場的 30 間照顧者友善商戶及團體，當中還有 5 間獲得早前在 Facebook 舉辦的「我最喜愛的商戶／團體大獎」。

更有照顧者友善商戶和照顧者親臨現場，分享他們的「人情味故事」。植根社區的商戶會主動關心照顧者及家人的需要，鼓勵社會服務支援，善用商舖優勢，扮演民間關愛隊的角色。這個由社福界、商界及民間共創的照顧者關愛隊模式，不單止共同打造了照顧者友善社區，更加有助社區篩選及預防高危照顧者的誘因，及早介入社區上有需要的照顧者。

感謝各位大力支持和參與，我們已為 5000 位照顧者「照顧者易達咭」發出實體或電子咭，歡迎全港近 112 萬名照顧者申請易達咭，讓全港照顧者可到平台現時 70 間照顧者友善商戶近 200 分店，享受衣、食、住、行各方面折扣優惠。商界一直渴望實踐 ESG 中的社會責任，照顧者卡讓商戶為照顧者帶來各方面的消費福利，關心與肯定，更會鼓勵有需要的照顧者申請照顧者卡，締造共融文化，肯定照顧者的付出，共同打造照顧者友善社區。

Carer EPS comprises of 16 NGOs, we are the First Convenor cum Secretariat, joining hands to support carers in response to International Carer Month and the government's policy initiatives.

On October 24, they hosted the "Carer-Friendly Business Recognition Ceremony", honoring businesses and groups that have supported carers by offering various discounts and benefits.

Nearly 100 people attended the event, including distinguished guests: Mr. Ho Kai-ming, JP, Under Secretary for Labour and Welfare; Dr. Tik Chi-yuen, SBS, JP, Legislative Council Member (Social Welfare Sector); Ms. Lam So-wai, Legislative Council Member (New Territories Southeast); Ms. Wong Lam Tsui-ling, Vice President of the Greater Bay Area Hong Kong Women Entrepreneur Association; and Professor Chong Ming-lin from the School of Social Sciences at Saint Francis University. Additionally, the heads of 16 social welfare organizations participated.

Thirty businesses and groups were recognized for their carer-friendly initiatives, with five receiving the "Most Loved Business/Group Award" based on a Facebook campaign. Some award-winning businesses, alongside carers, shared heartfelt stories on how they support carers in their daily lives. These businesses actively engage with carers in the community, acknowledging their stress and encouraging them to seek social services. By acting as informal care networks, they help foster a carer-friendly community and aid in identifying high-risk carers early for community intervention.

Thanks to strong participation and support, 5,000 carers have already received either a physical or digital Carer EPS Card. The initiative aims to expand eligibility to Hong Kong's estimated 1.12 million carers, allowing them to enjoy discounts at around 200 locations of 70 carer-friendly businesses across the city. Businesses eager to fulfill their social responsibility under ESG principles are encouraged to participate, offering benefits, recognition, and support to carers while promoting an inclusive community.



照顧者易達平台  
Carer EPS Platform

[www.carereps.org](http://www.carereps.org)

登記成為照顧者易達咭會員，獲取更多照顧者活動資訊及享用商店優惠  
Register for the Carer EPS Card for event updates & store discounts

[carereps.org/carereps-registration-form](http://carereps.org/carereps-registration-form)

# 6.22「愛·童心」賣旗籌款

## June 22 "Love for Children" Flag Day Fundraiser

今年的賣旗日賣旗貼紙，以「愛·童心」為題，用 AI 設計各種動物，構思來自小朋友們好喜歡收集全套動物園動物公仔，亦希望透過活潑可愛的圖畫提倡大家一起追求擁有一顆像小孩子般的童心、擁有幸福純真的愛。一共 16 隻海陸空動物分別代表 16 種「愛的元素」：信、望、愛、喜樂、信實、恩慈、溫柔、良善、仁愛、忍耐、節制、感恩、和平、真誠、接納、關懷，而充滿童真的字是由曾經參與機構活動、有特殊教育需要的小朋友所寫的，甚具意義。

今年我們也組織了全港首隊毛孩義工隊，20 隻狗狗在新界各區化身慈善大使，吸引不少市民前來捐款互動，讓活動生色不少！

感恩今年賣旗日在義工人數和善款收入都創下歷年新高，當中教會和學校的大力支持是活動順利成功舉行的主要原因，你們的支持和參與，驅策我們努力前行，服務社會作鹽作光。



This year's Flag Day charity stickers were themed "Love for Children", featuring a delightful collection of animals designed using AI. The inspiration came from children's love of collecting full sets of zoo animal figurines. Through these playful and adorable illustrations, we hope to encourage everyone to embrace a heart filled with childlike joy and the pure happiness of love.

A total of 16 air, land, and sea animals were created, each representing a unique "Element of Love": **Faith, Hope, Love, Joy, Faithfulness, Kindness, Gentleness, Goodness, Compassion, Patience, Self-Control, Gratitude, Peace, Sincerity, Acceptance, and Care.** The handwritten elements displayed on the stickers

were penned by children with special educational needs who had previously participated in our programs, giving them heartfelt significance.

This year, we also launched **Hong Kong's first-ever volunteer dog team!**

Twenty furry friends became charity ambassadors across various districts in the New Territories, drawing in curious donors and adding joy and warmth to the event.

We are truly thankful—**this year's Flagday saw record highs** in both the number of volunteers and total donations raised. The unwavering support from churches and schools was a key factor in the event's success.

主要統計 Major Statistics	
學校旗袋 School flag bags	1586
團體旗袋 Organization flag bags	163
個人義工 Individual volunteers	340
總旗袋 Total flag bags	2089
參與學校 Participating schools	35 間
總善款 Total funds raised	HK\$578,928

Your participation and encouragement continue to drive us forward, inspiring us to be salt and light in serving the community.





# 第二十四屆 AEON「幸福的黃色小票」

## The 24th Session of AEON "Happy Yellow Ticket"



「幸福的黃色小票」是AEON舉辦的慈善活動，在每月的11日，AEON顧客在購物付款後會得到一張黃色小票，AEON邀請不同的NGO慈善團體在店舖當天設置投放箱，顧客將黃色小票投放到想要支持的團體的投放箱裡。

AEON將根據各團體獲得的小票金額進行計算，並將小票合計金額的1%，以物品形式捐贈給各團體。

此活動已舉辦多年，AEON第二十四屆「幸福的黃色小票」頒贈儀式於9月17日順利完成。感謝AEON永旺(香港)百貨有限公司捐贈。

我們中心一直致力為SEN學童、家庭、照顧者、低收入家庭及不適設居所居民等提供服務和支援，在2024年上半年已服務超過7萬人次，我們更是大埔首間成立SEN照顧者會所。

活動當天，我們亦有幸邀請到何文田循道衛理楊震幼兒學校的小朋友為當日帶來應節的「開開心心迎中秋」表演及保良局莊啟程第二小學帶來精彩的K-POP舞蹈表演，為現場帶來熱鬧的氣氛。

感謝AEON透過照顧者會所令設施更完善，相信每位SEN小朋友們可以在他們合適的舞台發光發亮，照顧者亦能透過不同機會將能力及專長展現，從而讓他們多元發展。

"Happy Yellow Ticket" is a charitable initiative organized by AEON. On the 11th of each month, AEON customers receive a yellow receipt after making a purchase. AEON invites various NGO charitable organizations to set up collection boxes at their stores on that day. Customers can place their yellow receipts into the box of the organization they wish to support.

AEON calculates the total value of receipts collected by each organization and donates 1% of the total amount in the form of goods to them.

This meaningful campaign has been running for many years. The 24th "Happy Yellow Ticket" donation ceremony was successfully held on September 17. We extend our heartfelt thanks to AEON Stores (Hong Kong) Co., Limited for their generous donation.

The 24th AEON "Happy Yellow Ticket" Donation Ceremony was successfully held on September 17, marking another meaningful milestone in community support. We extend our heartfelt gratitude to AEON Stores (Hong Kong) Co., Ltd. for their generous donation.

Our center remains committed to supporting SEN children, their families, caregivers, low-income households, and residents in inadequate housing. In the first half of 2024, we served over 70,000 individuals, making a significant impact in the community. Additionally, we proudly established Tai Po's first SEN Carer Clubhouse, providing a dedicated space for caregivers to connect and receive support.

The event featured delightful performances, including "Joyful Mid-Autumn Celebration" by young students from Homantin Yang Memorial Methodist Preschool, and energetic K-POP dance routines presented by Po Leung Kuk Vicwood K. T. Chong No. 2 Primary School.

Thanks to AEON's sponsorship, the Carer Clubhouse facilities have been further enhanced. We believe that every SEN child deserves a platform to shine, and caregivers should have opportunities to showcase their talents and expertise, fostering diverse growth and development.



# 康復服務

## Rehabilitation Service





## 康復服務 Rehabilitation Service

欣悅家長綜合服務中心暨兒童學習及發展中心持續深化特殊學習需要 (SEN) 學童的全人發展服務。我們透過「科、音、體、藝」四大範疇，為學童提供多元化的潛能發展機會，幫助他們探索自己的“SuperENergy”，展現獨特才能。

在照顧者支援方面，「照顧者會所 Mama and Papa's Club」已發展成為一個溫暖互助的聚腳點，這個空間讓照顧者得以喘息，更逐步發展出個人興趣與事業方向，同時也成為經驗傳承與情感交流的重要平台，體現了生命影響生命的正向循環。

特別值得一提的是，我們在 2024 年 7 月引進全港首部電動共融體驗車「ZebraGo 斑馬線」，流動及無地域限制地將服務延伸至社區各個角落，特別是偏遠屋村及鄉郊。「ZebraGo 斑馬線」配備了專業訓練設備和互動體驗區，讓更多 SEN 家庭能夠便捷地獲得支援，同時也向公眾推廣共融理念。

隨著社會需求不斷演變，我們在 12 月正式開展「友智識」長者數碼共融服務，透過定期工作坊和一對一指導，協助長者適應數碼化生活。這項新服務不僅回應了時代需要，更實現了我們從兒童到長者的全齡關懷願景，讓不同世代都能獲得適切支援。

Charis Parent Integrated Service Center and Center for Children with Special Educational Needs continues to deepen its whole-person development services for children with Special Educational Needs (SEN). Through the four core domains of "Science, Music, Sports, and Arts," we provide diversified opportunities for children to explore their unique "SuperENergy" and showcase their distinctive talents.

In terms of carers support, the "Mama and Papa's Club" has evolved into a warm and mutually supportive gathering place. This space not only offers carers much-needed respite but also facilitates the development of personal interests and career aspirations. It serves as a vital platform for experience sharing and emotional connection, embodying a positive cycle of life influencing life.

A notable highlight in 2024 was the introduction of Hong Kong's first electric inclusive experience vehicle, "ZebraGo," in July. This mobile service extends our reach to various community corners, particularly remote public housing estates and rural areas, without geographical constraints. Equipped with professional training facilities and interactive experience zones, "ZebraGo" enables more SEN families to access support conveniently while promoting inclusive values to the public.

Responding to evolving societal needs, we officially launched the "Smart Silver Digital Inclusion Programme for Elders" initiative under the "Friendly IT" program in December. Through regular workshops and one-on-one guidance, we assist elderly individuals in adapting to digital life. This new service not only addresses contemporary demands but also fulfills our vision of cross-generational care, ensuring appropriate support for individuals across all life stages.

社會福利署大埔及北區分區福利辦事處 Tai Po and North District Social Welfare Office, Social Welfare Department

## 照顧者美麗旅程 Beautiful Journey for Carers



本處於 1 月初與社會福利署、大埔扶輪社合辦「願望快車」活動，為 SEN 家庭打造一個充滿溫馨與歡笑的特別旅程。大埔扶輪社義工們駕駛私家車，帶領 10 個 SEN 家庭，共 30 人一同遊覽飛鵝山、青馬大橋觀景台及港珠澳大橋等景點，讓平日較少機會外出遊覽的 SEN 孩子與家長一同可以輕鬆欣賞香港美景，並享用自助餐。扶輪社義工的帶領及耐心陪伴下與家庭互動交流，彼此展現燦爛笑容。此活動不僅減輕了照顧者的壓力，更為 SEN 家庭創造了珍貴的親子回憶，體現了社區共融的精神。

In early January, we co-organized the "Wishing Express" event with the Social Welfare Department and the Tai Po Rotary Club, creating a special journey filled with warmth and joy for SEN families. Volunteers from the Tai Po Rotary Club drove private vehicles to take 10 SEN families (totaling 30 participants) on a scenic tour to landmarks such as Fei Ngo Shan, Tsing Ma Bridge Viewing Platform, and the Hong Kong-Zhuhai-Macao Bridge. This outing provided SEN children and their parents—who often have limited opportunities for leisure outings, a chance to enjoy the beautiful sights of Hong Kong while indulging in a buffet meal. Through interactive engagement under the guidance and patient companionship of Rotary Club volunteers, the families shared radiant smiles. This event not only alleviated the stress of carers but also created precious bonding memories for SEN families, embodying the spirit of community inclusivity.



本處聯同社會福利署大埔及北區的「照顧者加油站」及「同心同行」兒童發展親子計劃，合辦「親親家庭撐得起日營」，共有 41 名照顧者連同 34 名被照顧者參與，受惠人數共 75 人，主要對象是 SEN 及男士照顧者，透過親子戶外活動與家人建立正面關係。

Our organization in collaboration with the Social Welfare Department's Tai Po and North District offices to implement two key initiatives - the "Carers Station" and the "Hand in Hand" Child Development Parent-Child Program - to jointly organize the "Family Bonding and Empowerment Day Camp." The event successfully engaged 41 carers along with 34 care recipients, benefiting a total of 75 participants. The program specifically targeted special educational needs SEN families and male carers, utilizing outdoor parent-child activities as an intervention strategy to facilitate positive family relationship building.



精神健康諮詢委員會 + 離島扶輪社 Advisory Committee on Mental Health + Rotary Club of Channel Islands

# 星 SEN 相惜：大埔及北區 特殊教育照顧者全方位支援計劃

## Star Link Holistic Support for SEN Carers of Tai Po and North District

### 計劃特色

- 提供四大支援：喘息空間、自我增值活動、同路人同行、社區共融教育
- 團結 SEN 孩子照顧者，關注照顧者需要，強化照顧者動力

### Program Highlights

- Providing four core support services: Respite Space, Self-Development Activities, Peer Support Network, and Community Inclusion Education
- Uniting carers of children with Special Educational Needs (SEN), addressing their needs, and empowering them in their caregiving role



### 1. 喘息空間 Mama & Papa's Club | Respite Space: Mama & Papa's Club

- 為每一位 SEN 照顧者提供一個避風港、一個喘息空間  
Offers every SEN carer a safe haven and a place to take a break

### 2. 自我增值活動：SEN 照顧者自在自學活動 Self-Development Activities: Independent Learning for SEN Carers

- 發掘照顧者興趣及潛能，平衡照顧責任及生活  
Encouraging carers to explore interests and potential, balancing caregiving with life.

### 3. 同路人同行：友你同 SEN 同行小組及朋輩同行配對支援計劃 Peer Support Network: "Walk with SEN" Group and Peer Matching Support Program

#### 友你同 SEN 同行小組

- 每月一次同路人聚會，SEN 照顧者彼此「惺惺相惜」
- 顧及大埔及北區以外的照顧者，還有網上的「虛擬友你同 SEN 聊天室」連結全港 SEN 照顧者

#### 朋輩同行配對支援計劃

- 讓新手 SEN 照顧者找到一個同行者一同適應照顧者角色
- 給資深 SEN 照顧者一個分享照顧經驗的渠道，支援其他照顧者，與他們同行

#### Walk with SEN Group

- Monthly peer gatherings where carers connect through shared understanding.
- For carers beyond Tai Po and North District, online "Virtual SEN Chatrooms" connected carers across Hong Kong

#### Peer Matching Support Program

- Helps new SEN carer adjust to their role with a partner
- Provides experienced carers a channel to share experiences and support others

### 4. 社區共融教育 Community Inclusion Education

- 定期到社區、大型活動中設置街站，推廣關懷 SEN 照顧者的身心靈需要及共融教育
- Regular community booths and events to promote awareness of SEN carers' physical, emotional, and spiritual needs and to foster inclusive education



### 歡宜

大家好，我叫歡宜，育有一名八歲星星兒子。早幾年有幸分配到粉嶺公屋，但依然到大埔浸信會社會服務處參加活動，也是這裏的常客。到底有什麼吸引我呢？正正是因為有一個空間、一班朋友和最重要的歸屬感。我很喜歡 SEN 照顧者會所的設施，也很喜歡有廚房可以跟同路人一起參與活動、一起做月餅、餃子等。在小朋友上學的時候，我有自己的 me-time，可以預約會所的房間與朋友唱 K 和玩 Switch 遊戲。我是一個很活躍的參與者，所以也很喜歡參與中心社工、實習社工、職員構思的不同活動。

### 照顧者 心聲

#### Sharon

感謝「星 SEN 相惜」計劃提供各式各樣的活動和工作坊，讓大小朋友都可學習和有放鬆的空間



### 社會效益 Social Impact

- 提升 SEN 家庭的身心靈健康
- 讓大眾了解 SEN 家庭的需要，提升大眾對 SEN 家庭的包容，締造 SEN 友善社區
- Enhancing the holistic well-being of SEN families
- Raising public awareness of SEN family needs. Foster a more inclusive and SEN-friendly community





社創基金, 利希慎基金 Social Innovation and Entrepreneurship Development Fund, Lee Hysan Foundation

# 全港首部全電動共融體驗車 ZebraGo 斑馬線

ZebraGo - The First Electric Inclusive Experience Truck in Hong Kong



ZebraGo 斑馬線項目由政府社創基金 (SIE) 和利希慎基金支持，自 2024 年 7 月投入服務，是全港首部電動共融體驗車，採用 5.5 噸環保電動車改裝而成，目的為回應特殊教育需要 (SEN) 小學學童在校適應，提供共融校園體驗活動系列，亦為本處首個社企。

ZebraGo 斑馬線的服務圍繞尊重多元、建立同理心、促進協作和提升處理衝突欺凌能力四大主題，採用沉浸式、協作式、體驗式手法，為 SEN 學童及全校師生建立 SEN 友善的共融校園。

車廂可分為沉浸體驗模式或言語及職業治療兩種設置模式，並可以在 15 分鐘內切換。學童可以在車上體驗 3D 沉浸式環境，或者接受言語治療和職業治療等個人服務，此外我們的團隊亦提供入校服務，提供共融課堂、共融大使訓練、講座和展覽等。



Supported by the Government's Social Innovation and Entrepreneurship Development Fund (SIE Fund) and the Lee Hysan Foundation, the ZebraGo project launched in July 2024 as Hong Kong's **first electric inclusive experience truck**. This pioneering 5.5-ton eco-friendly electric truck has been specially modified to support primary school students with **Special Educational Needs (SEN)**, helping them adapt to school life through a series of inclusive campus experience programs. It also marks our organization's very first social enterprise initiative.

ZebraGo's services are centered around four key themes: respecting diversity, building empathy, fostering collaboration, and enhancing conflict resolution and anti-bullying skills. Using immersive, collaborative, and experiential approaches, we aim to create an SEN-friendly inclusive campus for both SEN students and the entire school community.

The interior of the truck can be configured into two modes:

1. **Immersive experience mode** (featuring a 3D virtual environment)
2. **Speech and occupational therapy mode**

These two modes are **interchangeable within just 15 minutes**.

Students may explore a 3D immersive space or receive personalized services like speech therapy and occupational therapy.

Additionally, our team offers **on-campus services** such as:

- Inclusive classroom sessions
- "Inclusion Ambassador" training
- Talks and exhibitions



## 社會效益

- 點到點一站式資助專業訓練節數：226 節
- 受惠於點到點一站式資助專業訓練的家庭：19 個
- 共融活動服務節數：46 節
- 於學校推行入校 SEN 共融教育服務：1094 人

## Social Impact

- 226 sessions of point-to-point subsidized professional training
- 19 families benefiting from subsidized professional training
- 46 sessions of inclusive activity services
- 1,094 students engaged in on-campus SEN inclusive education programs

## 合作夥伴

- 上水鳳溪第一小學
- 大埔浸信會公立學校
- 天主教聖母聖心小學
- 中華基督教會望覺堂啟愛學校
- 金錢村何東學校
- 香港紅十字會瑪嘉烈戴麟趾學校
- 香港教育大學
- 新界婦孺福利會基督教銘恩小學

## Collaborating Partners

- Sheung Shui Fung Kai No.1 Primary School
- Tai Po Baptist Public School
- Sacred Heart of Mary Catholic Primary School
- The CCC Mongkok Church Kai Oi School
- Kam Tsin Village Ho Tung School
- The Hong Kong Red Cross Margaret Trench School
- The Education University of Hong Kong
- NTWJWA Christian Remembrance of Grace Primary School





社區投資共享基金 Community Investment and Inclusive Fund (CIIF)

# 耆盼友里：居家安老 - 共建認知障礙友善社區計劃

## Neighbour - OLD Aging-in-place The program for Building a Dementia Friendly Community Project

### 「社、商、醫、校」

- 以「鄰舍凝聚」、「社區參與」、「跨界別協作」為介入點
- 建立「社區守護員」義工小隊，搭建鄰里支援網絡
- 跨界別協作平台及轉介機制，持續回應區內長者的需要
- 建立「黃金 20+」互助小組，展現長者和照顧者鄰舍互助和老有所為

### "Social, Commercial, Medic and School" collaboration model

- Using neighborhood cohesion, community engagement, and cross-sector collaboration as entry points
- Establishing a "Community Guardian" volunteer team to build a neighborhood support network
- Developing a cross-sector collaboration platform and referral mechanism to provide an ongoing response to the needs of elderly residents in the district
- Setting up "Golden 20+" mutual support groups to demonstrate neighborly mutual aid among the elderly and caregivers, and promote productive aging



### 參與對象 Participants



### 協作夥伴 (排名不分先後) Collaborating Partners (in no particular order)

- 浸信會愛羣社會服務處  
大埔浸信會區張秀芳長者鄰舍中心
- 耆色園主辦可康耆英鄰舍中心
- 大埔浸信會
- 富亨浸信會
- 大埔地區康健站
- 大埔浸信會公立學校
- 大埔德萃小學
- 漢師德萃學校
- 神召會德萃書院 (小學部)
- 大光德萃書院
- 大埔循道衛理小學
- 金錢村何東學校
- 銘恩中心
- Mega Inspire
- 富亨浸信會呂郭碧鳳幼稚園
- 救世軍大埔長者社區服務中心
- 鄰舍輔導會「好鄰舍 @ 大埔」— 富蝶邨 (第二期) 地區支援網絡計劃
- 賽馬會流金匯
- 尚春堂
- 置佳物業服務有限公司
- 愛·營點

### 社會效益 Social Impact

- 學校、團體及商戶認識及參與長者友善的社區建構
- 建立認知障礙友善的安老社區及互助支援網絡
- 促進跨界別協作
- Schools, groups and businesses understand and participate in the construction of age-friendly communities
- Establishing a dementia-friendly elderly community and mutual support network
- Facilitate cross-sector collaboration



社會創新及創業發展基金 The Social Innovation and Entrepreneurship Development Fund

# 「友智識」長者數碼共融計劃

## "Smart Silver" Digital Inclusion Programme for Elders

本處於 12 月開始作為政府認可的「友智識」長者數碼共融計劃服務提供者，位於大埔的兩個服務點，富亨邨及懷義街舉辦工作坊，透過各種專項活動和資源幫助他們更好地融入數字化社會。我們希望提升長者的自信心和獨立性，讓他們能夠輕鬆使用科技產品，為長者創造一個友善的學習環境，讓每位長者都能在數碼時代中找到自己的位置。

主要服務項目：提供定期的工作坊，教授長者如何使用智能手機，課程內容包括基本操作、社交媒體使用及網上安全知識。

我們將持續拓展服務範圍，計劃引入更多的數碼工具和資源，以滿足長者日益增長的需求。同時，將加強與社區機構的合作，共同推動長者的數碼共融，能夠讓長者享受到科技帶來的便利和樂趣。

Since December, we became a government-approved service provider for the "Smart Elderly Digital Inclusion Programme", organising workshops at two service points in Tai Po to help them better integrate into the digital society through various special activities and resources. We hope to boost seniors' confidence and independence, allowing them to use technology with ease, and to creating a friendly learning environment for the elderly so that every elderly person can find their place in the digital age.

Core services including: Provide regular workshops to teach the elderly how to use smartphones. Course content includes basic operations, social media usage and online safety knowledge.

We will continue to expand our service scope and plan to introduce more digital tools and resources to meet the growing needs of the elderly. At the same time, we will strengthen collaboration with community organisations to jointly promote digital inclusion for the elderly, so that they can enjoy the convenience and fun brought by technology.



大埔浸信會慈惠基金 Tai Po Baptist Charity Fund

# SEN 滿埔關懷

## SEN at Tai Po



「SEN 滿埔關懷」社區支援服務在 2024 年度持續為有特殊教育需要 (SEN) 的低收入家庭提供全方位支援。今年我們成功舉辦多場 SEN 小朋友外出體驗活動，包括參觀品格體驗館、機場博覽館及樹屋農莊等，讓學童在互動中探索潛能、認識職業發展；同時透過親子手工作坊和自然探索活動，促進家庭共融，創造美好回憶。此外，我們為照顧者開辦不同活動及情緒支援小組，有效幫助他們紓解壓力，提升家庭照顧品質。

為強化社區支援網絡，我們於 2024 年推出「教會導師培訓」，裝備一批會友及社區人士成為 SEN 學童導師，提升社區對 SEN 學童的支援能力。感謝所有參與者及合作伙伴的支持，讓我們能夠攜手為 SEN 家庭創造更包容、友善的成長環境。

The "SEN Community Support Service" will continue to provide comprehensive support to low-income families with Special Educational Needs (SEN) in 2024. This year, we successfully organized multiple experiential outings for SEN children, including visits to the Character Experience Centre, the Airport Exhibition Centre, and the Treehouse Farm. These activities allow students to explore their potential and learn about career development through interactive experiences. Additionally, we promote family integration and create cherished memories through parent-child craft workshops and nature exploration activities. We also offer various activities and emotional support groups for caregivers, effectively helping them alleviate stress and enhance the quality of family caregiving.

To strengthen the community support network, we will launch a "Church Mentor Training" program in 2024, equipping a group of church members and community individuals to become mentors for SEN children, thereby enhancing the community's capacity to support these children. We express our gratitude to all participants and partners for their support, enabling us to work together to create a more inclusive and friendly growth environment for SEN families.

服務人次  
Number of  
People Served  
**1120**





社會福利署 Social Welfare Department

## 課餘託管服務

### After School Care Programme (ASCP) for Primary School Students

本中心獲社會福利署資助，專為有特殊教育需求 (SEN) 的低收入家庭提供課餘託管服務。旨在為這些家庭的孩子提供安全、支持和有益的環境，促進他們的學習和社交發展。

#### 服務內容包括：

- 提供個性化學習計劃，針對學生的需求進行調整
- 協助學生完成課業，提供作業輔導
- 開展補習班，增強學科知識
- 教授溝通技巧和情緒管理策略
- 安排各類體育活動，如球類運動和團隊遊戲
- 提供創意藝術和手工藝活動，激發學生的創造力

我們致力於為有需要的低收入 SEN 家庭提供全面的課餘託管服務，支持學生的學習和社交發展。

受惠人數  
Number of beneficiaries

9 位

人次  
(直接及間接)  
No. of Service Visits  
(direct and indirect)

2151 次



Funded by the Social Welfare Department, the Centre provides after-school care services for low-income families with special educational needs (SEN). Designed to provide a safe, supportive, and nurturing environment for the children of these families to foster their academic and social development.

#### Services include:

- Personalized learning plans are available, tailored to the needs of the students
- Assist students in completing their coursework and provide homework assistance
- Conduct remedial classes to enhance subject knowledge
- Teach communication skills and emotion management strategies
- Arrange a variety of sports activities such as ball games and team games
- Creative arts and crafts activities are offered to stimulate students' creativity

We are committed to providing comprehensive after-school care services to low-income SEN families in need to support students' academic and social development.



#### 社會效益 Social Impact

課餘託管服務不僅對參與的學生和家庭產生積極影響，還對整個社會帶來多方面的效益。同時在促進教育公平、提升社會包容性、穩定家庭和增強社區參與等方面具有重要的社會效益。這些服務不僅有助於個別學生的發展，還對整個社會的和諧和進步起到積極的推動作用。

After-school care services not only have a positive impact on the students and families involved, but also bring benefits to society as a whole. At the same time, it has important social benefits in promoting educational equity, improving social inclusion, stabilizing families and enhancing community participation. These services not only contribute to the development of individual students, but also play a positive role in promoting the harmony and progress of the whole society.

# 學校社會工作服務

School Social Work Service





# 學校社會工作服務 School Social Work Service



在學校社會工作方面，本機構提供以下四大範疇的服務，包括：

- 全方位學生輔導服務
- 諮詢及督導服務
- 特殊教育需要 (SEN) 學生輔導服務
- 幼稚園駐校社工服務

本年度服務近 30 間學校，包括全港小學、幼稚園及中學，服務教師、學生及家長共約 68,880 人，涵蓋多個辦學團體，包括浸信會聯會、德萃教育集團、佛教聯合會及保良局等。由 2022 年起，學校社會工作服務積極與屬校攜手推行幸福校園，培養學童建立幸福思維，著重學校價值觀教育，積極營造關愛共融的學校氛圍格，讓學童健康幸福快樂地成長。

Our stationing School Social Work Service provide the following services to primary schools, secondary schools and kindergartens:

- Comprehensive Student Counselling Services
- Professional Consultation and Supervision Services
- Counselling Services for Students with Special Educational Needs (SEN)
- Kindergarten School Social Work Service

This year, services are being provided to nearly 30 affiliated schools, including kindergartens, primary and secondary schools, serving approximately 68,880 teachers, students, and parents from schools in various school sponsoring bodies, including the Baptist Convention, St Hilary's Education Group, the Buddhist Association, and Po Leung Kuk, etc. Since 2022, the school social work service has actively collaborated with affiliated schools to promote happy campus, help students develop a positive mindset, emphasize value education in schools, and create a caring and inclusive school atmosphere, which makes students grow up in a healthy and happy environment.

## 駐校社工服務特色 Features of School-based Social Work Services

### 營造幸福校園 Creating a Happy Campus

培養學童暖實力，注入幸福思維及價值觀教育元素，融入駐校服務的學童成長教育服務當中，培養學生終身受用價值觀。

Creating a Happy Campus — cultivating students' emotional resilience, introducing elements of happiness mindset and values education, integrating these into the school-based services and student development education, fostering lifelong valuable outlooks for students.

### 堂校社協作 Collaboration amongst Church, Community and School

聯同教會進入學校，以「堂校社協作」模式推行駐校社工服務是我們核心信念之一，有助更深入幫助學童及學童家庭，以基督的心出發，堅守信仰中對學童幸福快樂成長的重視。

Implement stationing school social work services through the "Church-School-Community" collaboration model is one of the key components, helping to more deeply assist students and their families, starting from a heart of Christ and upholding the faith's emphasis on students' happy and healthy growth.

### 敏捷回應學校需要 Prompt Response to School Needs

度身訂造輔導服務，透過政策與組織規劃，以及檢討會議，系統評估及回應符合校情校政需要的學生及家長成長活動及學生輔導服務計劃。

Tailor-made counselling service plans through Policy and Organisation Planning and review meetings, systematically assessing and responding to student and parent development activities that align with school conditions and policies.

### 綜合地區及家庭為本的支援服務 Integrated Community and Family-based Support Services

積極強化綜合地區服務、不同基金、慈善團體、商界及社會企業的服務資源，為學童、家長 / 照顧者、支援學童精神健康，為社區其他有需要人士提供不同類型的支援服務。

Actively enhancing integrated community services, drawing on resources from various funds, charitable organisations, businesses, and social enterprises to provide different types of support services for students, parents/caregivers, and other community members in need of mental health support.

### 繪本及桌遊揉合輔導 Counselling through Picture Books and Board Games

以學童為本、價值取向、體驗式學習法、以繪本及桌遊為媒介、生動且有趣地提升學童幸福感，珍惜生命，培養良好品格。

Adopting Student-Centered approach, valuing experiential learning methods, using picture books and board games as media to vividly and interestingly enhance students' sense of happiness, appreciating life, and cultivating good character traits.

# 幸福校園框架

## Happy Campus Framework

本處幸福校園工作參考正向心理學 PERMA+H Model 模式及教育局 4Rs 《精神健康約章》作為推動校內師生及家長幸福感的框架。

School Social Work Service emphasize on the "Happy Campus" drive is conceptualized from the Positive Psychology PERMA+H Model and the Education Bureau's 4Rs "Mental Health Charter" Model as a framework to promote the well-being of staff, students, and parents within the school.



所學校提供  
駐校社工服務  
Schools Used Our  
On-Campus  
Social Work Services

28+

所學校提供諮詢、  
督導、入校等服務  
Schools Used Our Services  
(Consultation, Supervision,  
On-site Support)

60+

學童、家長及  
教師提供服務  
Students, Parents  
and Teachers  
Being Served

57,660+

學校社會工作  
服務總服務人次  
Total No. of  
Service Visits

71,260+



夢想成真基金會 及 離島扶輪社 Dreams Come True Foundation Limited & Rotary Club of Channel Islands

# 點亮飛凡獎學金計劃

## "Illuminating Extraordinary Talent Scholarship"



本處學校社會工作服務與夢想成真基金會合辦「點亮飛凡獎學金」計劃，旨在以獎學金方式，資助合資格有特殊教育需要的基層高小學童，在科、音、體、藝領域中發展潛能，裝備未來技能，擴闊視野及建立社會網絡。

Our School Social Work Service, in collaboration with the Dreams Come True Foundation, is implementing the "Illuminate the Extraordinary Scholarship" program. This initiative aims to provide scholarships to eligible grassroots primary school students with special educational needs, enabling them to develop their potential in the fields of science, music, sports, and arts, equip them with future skills, broaden their horizons, and establish social networks.

參與計劃 學校數目 Number of Participating Schools  <b>60+</b>	收集 提名表格 Number of Nomination Forms Collected  <b>150+</b>	學童科、音、 體、藝潛能 Student Potential in Science, Music, Sports, and Arts  <b>100+</b>
---	---	---



▲ 探訪香港話劇團教育中心 \_ 互動戲劇體驗學習活動



▲ 探訪香港城市大學工學院

### 計劃里程 Project Timeline



▲ 點亮飛凡獎學金頒獎禮



▲ 於頒獎禮當中學童透過攤位展示才華



▲ 微型師友計劃 —— 師友聚會

### 活動成效 / 社會效益 Activity Outcomes / Social Impact

- 讓 SEN 學童的潛能被看到目見及認同
- 讓資源缺乏的 SEN 學童能獲得資源發展潛能
- 學童透過潛能發展活動擴闊視野
- 透過師友計劃提升學童社交支援網絡
- 透過頒獎禮及計劃的社會回響，建立和諧共融社區氛圍
- Recognizing and validating the potential of students with special educational needs (SEN)
- Providing resource-limited SEN students with opportunities to develop their potential
- Allowing students to broaden their horizons through potential development activities
- Enhancing students' social support networks through mentorship programs
- Creating a harmonious and inclusive community atmosphere through award ceremonies and positive social feedback from the program



香港救助兒童會 Save the Children Hong Kong

# 牽手童行 – 學童精神健康促進計劃

## Children Mental Wellness Enhancement Program

本計劃由大埔浸信會社會服務處學校社會工作服務及香港救助兒童會合辦，計劃包含多項元素：

- 入校兒童表達藝術社交情緒學習小組
- 正向管教學童及家長平行小組
- 幸福校園啟動禮暨交流分享會 (2023)
- 幸匯 - 幸福校園交流分享會 (2025)
- 向學校派發精神健康資源包

目標提升兒童精神健康、改善家長管教技巧及親子關係，喚起社區人士對兒童精神健康議題的關注。

參與學校 Participating Schools :  
(排名不分先後 in no particular order)

- 大埔浸信會公立學校  
Tai Po Baptist Public School
- 大埔循道衛理小學  
Tai Po Methodist School
- 大埔舊墟公立學校  
Tai Po Old Market Public School
- 馬鞍山靈糧小學  
Ma On Shan Ling Liang Primary School
- 佛教慈敬學校  
Buddhist Chi King Primary School
- 香港華人基督教聯會真道書院 (小學部)  
The Hong Kong Chinese Christian Churches Union Logos Academy



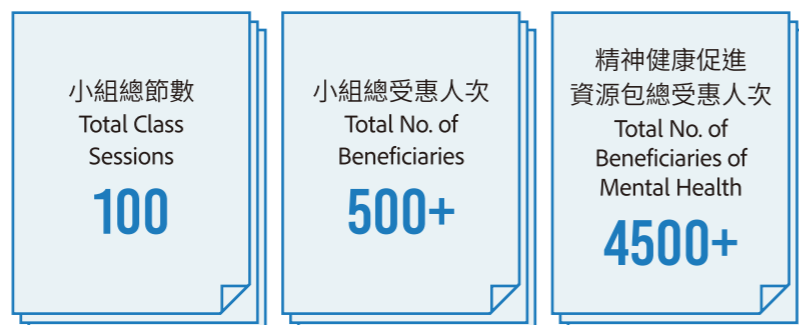
▲ 表達我心社交情緒學習小組

This program is co-organized by our School Social Work Service and Save the Children Hong Kong. It comprises multiple elements:

- In-school children's expressive arts and social-emotional learning groups
- Positive parenting student and parent parallel groups
- "Happy Campus Kick-off Ceremony and Seminar" (2023)
- "Happiness Hub - Happy School Seminar" (2025)
- Distribution of Mental Health Wellbeing Kits to schools

The program aims to enhance children's mental well-being, improve parenting skills and parent-child relationships, and raise community awareness of children's mental health issues.

學童及家長小組  
Student and Parent Groups



▲ 從心所有正向管教親子平行小組



▲ 從心所有正向管教親子平行小組



## 幸福校園交流分享會 Happiness Campus Sharing Conference



「幸福校園啟動禮暨交流分享會 (2023)」及「幸匯 - 幸福校園交流分享會 (2025)」為本項目大型業內交流會，除主題演講，亦設有多個小型工作坊就不同議題深入交流，參加學校眾多，交流踴躍，期望藉此推動社會對於學童精神健康的關注，探討最佳對策，實現幸福校園願景。

The "Happy Campus Kick-off Ceremony and Seminar (2023)" and "Happiness Hub - Happy Campus Seminar (2025)" are major industry exchange events under this project. In addition to keynote speeches, numerous smaller workshops were held to facilitate in-depth discussions on a variety of topics. Participation from schools was extensive and engagement was enthusiastic. The events aim to promote greater societal attention to children's mental health, explore effective strategies, and work toward the vision of creating happy and mentally healthy school environments.



\* 包括大專、中、小學幼稚園教育界、社會服務機構、社會企業、商界、大灣區社福界人士等等 including higher education, primary, secondary, and kindergarten education sectors, social welfare, social enterprises, business community, and the Greater Bay Area social welfare sector

### 活動成效 / 社會效益 Activity Effectiveness / Social Impact

- 促進業界交流協作，提升共建共創幸福校園力量
- 提升幸福校園思維領導力
- 促進兒童精神健康
- 策略性引入會服務資源共創幸福校園
- 促進前線老師的能力及技巧
- 家庭合作 / 照顧者友善校園
- Promote industry exchange and collaboration, enhancing the strength of co-constructing a happy campus
- Enhance thinking leadership for a happy campus
- Promote children's mental health
- Strategically introduce service resources to co-create a happy campus
- Enhance the capabilities and skills of frontline teachers
- Family collaboration / caregiver-friendly campus





AEON 永旺 AEON Stores (Hong Kong) Co., Limited

# AEON Dream 永旺七色花體驗營

## AEON Dream Service Learning and Career Planning Camp

AEON 百貨企業化身愛心商戶，為本處學校社會工作服務屬校學童提供了服務學習及生涯規劃的寶貴成長機會，10 間屬校學童搖身一變成為小店長，透過不同崗位工作體驗，了解自己、培養興趣、學習營銷、溝通及解難技巧，發展潛能，成就夢想。

AEON Department Store has transformed into a caring business, providing valuable growth opportunities in service learning and career planning for students from local schools under our social work services. Over 100 Students from affiliated schools took on the role of shopkeepers, gaining insight into themselves, cultivating interests, and learning marketing, communication, and problem-solving skills to develop their potential and achieve their dreams.

### 參與屬校 Participating Schools:

- 打鼓嶺嶺英公立學校  
Ta Ku Ling Ling Ying Public School
- 仁愛堂田家炳小學  
Yan Oi Tong Tin Ka Ping Primary School
- 大埔循道衛理小學  
Tai Po Methodist School
- 大埔浸信會公立學校  
Tai Po Baptist Public School
- 佛教中華康山學校  
Buddhist Chung Wah Kornhill Primary School
- 保良局莊啟程第二小學  
Po Leung Kuk Vicwood K.T. Chong No.2 Primary School
- 香港培道小學  
Pooi To Primary School
- 金錢村何東學校  
Kam Tsin Village Ho Tung School



8  
間屬校參與  
schools  
participated

100+  
學童成為小店長  
students became  
shopkeepers



▲ AEON Dream 永旺七色花體驗營

### 社會效益 Social Impact

- 為 100+ 學童成就夢想
- 讓學童了解及發展興趣
- 為學童創造服務學習及生涯規劃機會
- 讓學童提升營銷、溝通及解難技巧
- AEON 百貨企業實現 ESG 企業責任
- Achieving dreams for over 100 students
- Helping students understand and develop their interests
- Creating service learning and career planning opportunities
- Enhance students' marketing, communication and problem-solving skills
- AEON Department Store fulfills its ESG corporate responsibility.

### 本處提供學校服務之學校 (排名不分先後)

Schools that we have provided Social Work Services (in no particular order)

- |  |   |
|--|---|
| 大埔浸信會公立學校<br>Tai Po Baptist Public School  | 大埔崇德黃建常紀念學校<br>Sung Tak Wong Kin Sheung Memorial School                     |
| 富亨浸信會呂郭碧鳳幼稚園<br>Fu Heng Baptist Lui Kwok Pat Fong Kindergarten                   | 打鼓嶺嶺英公立學校<br>Ta Ku Ling Ying Public School                                  |
| 九龍城浸信會禧年(恩平)小學<br>Kowloon City Baptist Church Hay Nien (Yan Ping) Primary School | 馬鞍山靈糧小學<br>Ma On Shan Ling Liang Primary School                             |
| 大光德萃書院(大埔)<br>Tai Kwong Hilary College   | 上水東莞學校<br>Tung Koon School (Sheung Shui)                                    |
| 漢師德萃學校(旺角)<br>VNSAA St. Hilary School  | 金錢村何東學校<br>Kam Tsin Village Ho Tung School                                  |
| 德萃小學(大埔)<br>St. Hilary's School  | 東華三院群芳啟智學校<br>TWGHs Kwan Fong Kai Chi School                                |
| 神召會德萃書院(鑽石山)<br>AOG St. Hilary's College   | 三水同鄉會禰景榮學校<br>Sam Shui Natives Association Huen King Wing School            |
| 佛教慈敬學校<br>Buddhist Chi King Primary School                                       | 香港培道小學<br>Pooi To Primary School  |
| 佛教林炳炎學校<br>Buddhist Lam Bing Yim Memorial School                                 | 十八鄉鄉事委員會公益社小學<br>Shap Pat Heung Rural Committee Kung Yik She Primary School |
| 胡素貞博士紀念學校<br>Dr. Catherine F. Woo Memorial School                                | 大埔浸信會幼稚園<br>Tai Po Baptist Kindergarten                                     |
| 保良局田家炳千禧小學<br>PLK Tin Ka Ping Millennium Primary School                          | 大埔浸信會幼稚園運頭塘邨分校<br>Tai Po Baptist Kindergarten Wan Tau Tong Estate Branch    |
| 保良局莊啟程第二小學<br>PLK Vicwood KT Chong No. 2 Primary School                          | 浸信宣道會呂明小學<br>Conservative Baptist Lui Ming Choi Primary School              |
| 仁愛堂田家炳小學<br>Yan Oi Tong Tin Ka Ping Primary School                               | 聖公會阮鄭夢芹小學<br>SKH Yuen Chen Maun Chen Primary School                         |
| 五旬節于良發小學<br>Pentecostal Yu Leung Fat Primary School                              | 香港華人基督教聯會真道書院<br>HKCCCU Logos Academy                                       |
| 大埔舊墟公立學校<br>Tai Po Old Market Public School                                      | 東華三院徐展堂學校<br>TWGHS Tsui Tsin Tong School                                    |
| 大埔循道衛理小學<br>Tai Po Methodist School  |   |





# 地區綜合服務

## Community Integrated Service



## 地區綜合服務 Community Integrated Service

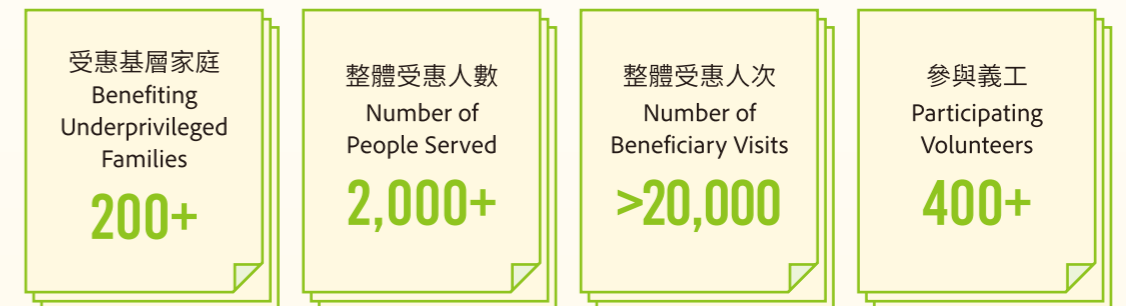
地區綜合服務聚焦關注大埔區內基層家庭需要，著力策劃持續性的基層家庭服務發展及義工動員工作，積極與教會、社署、學校及社福界團體等社區協作伙伴協辦多元化的地區計劃，動員地區義工網絡，以「好鄰舍精神」支援基層家庭的身心靈需要，促進社區互助文化，營造社區幸福感。

感恩天父恩典，讓本處在同行中見證街坊鄰舍與弟兄姊妹們的成長轉化。透過「堂校社」結合的方式，本處與大埔浸信會外展區與服侍的弟兄姊妹同行，期望讓弟兄姊妹在付出愛的同時，更能在愛的關係中反思信仰生命，經歷生命更新及轉化。

Community Integrated Service focuses on addressing the needs of underprivileged families in the Tai Po district. It is dedicated to planning sustainable development of underprivileged family services and volunteer mobilization efforts. We actively collaborate with community partners such as churches, social welfare departments, schools, and social service organizations to implement diverse regional programs. By mobilizing the local volunteer network, we support the physical, mental, and spiritual needs of underprivileged families under the spirit of "Good Neighbour," fostering a culture of mutual assistance within the community and enhancing community well-being.

We are grateful for the Father's grace, which allows us to witness the growth and transformation of our neighbors and brothers and sisters through our journey together. By integrating the church, school, and social service, we walk alongside Tai Po Baptist Church and the serving brothers and sisters. Our hope is that, while giving love, they can also reflect on their faith and experience renewal and transformation in their lives through relationships rooted in love.

### 參與對象 Target Participants





社區投資共享基金 The Community Investment and Inclusion Fund

# 幸福心房： 基層家庭家居及成長支援計劃

## Home Sweet Home : Household Development Project for Deprived Families

幸福心房計劃以「社、校、醫、商」協作模式，為大埔基層打造社區客廳，整合「課後場地」及教會「義工網絡」優勢，並提供課託、互助小組等支援。街坊從受助者轉為義工，透過探訪送暖串聯鄰里網絡，在互助中重建歸屬感，讓幸福扎根人際連結而非物質條件，達至幸福滿於心房。

本計劃榮獲國際獅子總會評選為香港十大優質社會服務計畫之一，並提名參選香港社會服務聯會舉辦的2024至2025年度「至善獎」。

The "Home Sweet Home: Household Development Project for Deprived Families" employs a collaborative model involving the community, schools, healthcare, businesses to create a community living room for grassroots residents in Tai Po. It integrates the advantages of "after-school spaces" and church "volunteer networks" to offer support such as after-school care and mutual help groups. Neighbours transition from beneficiaries to volunteers, connecting with others through warm visits and building a neighbourly network. This mutual support fosters a sense of belonging, allowing happiness to root in interpersonal connections rather than material conditions, achieving happiness in the heart.

This program has been selected by Lions Clubs International as one of Hong Kong's Top 10 Quality Social Service Awards. Additionally, it has been nominated for the 2024-2025 "Champions for Good Award", organized by the Hong Kong Council of Social Service.



### 計劃特色

- 「社、商、醫、校」協作模式
- 以「發展空間」、「親子關係」及「社區資源」為介入點
- 建立「幸福家庭維修隊」、「鬆ZONE」義工隊及「幸福召集」義工小隊，共同搭建鄰里支援網絡
- 跨界別協作平台及轉介機制，持續回應區內居於不適切居所的家庭需要

### Program Features

- Collaborative model involving "community, business, medical, and education".
- Focus on "development space," "parent-child relationships," and "community resources" as points of intervention.
- Establishment of the "Happy Family Repair Team," "Relax Zone" volunteer team, and "Happy Gathering" volunteer group to build a neighbourhood support network.
- Cross-sector collaboration platform and referral mechanism to continuously address the needs of families living in inadequate housing within the area.



### 參與對象 Target Participants

受惠基層家庭 Benefiting Underprivileged Families <b>200+</b>	整體受惠人數 Number of People Served <b>2000+</b>	整體受惠人次 Total Beneficiaries <b>20,000+</b>	參與義工 Participating Volunteers <b>180+</b>
---	--	--	--

### 社會效益

建立照顧者友善社區客廳，觸發街坊對社區客廳的參與和想像，家庭自發組織聚會及接觸，增加家庭間的凝聚及人情味，同時，讓家長重獲「Me time」，讓他們有心力回饋社區，衍生互助文化。

全港唯一同時針對不適切居所及鄉郊的維修隊，並且由街坊自發組成，強調自學互助，連結不同的社商夥伴舉辦防火和滅蟲等工作坊，讓街坊增長知識及掌握自救技巧，同時有經驗師父義工以舊帶新的形式服務街坊，活學活用，回饋社區。

「幸福樓家長互助網絡」及「幸福家庭維修隊」成為社區兩大重要資本，義工持續接觸的家庭，逐漸轉化為中心義工，促進家庭與社區間互助互惠，達致社區互助文化，共建幸福社區。

### Social Impact

The establishment of a caregiver-friendly community lounge stimulates neighbourhood participation and imagination regarding the community space. It encourages spontaneous family gatherings and interactions, enhancing family cohesion and warmth. Additionally, it provides parents with "Me time," enabling them to have the energy to give back to the community, thereby fostering a culture of mutual support.

This initiative is unique in Hong Kong, targeting both inadequate housing and rural areas with a repair team formed voluntarily by residents. It emphasizes self-learning and mutual assistance. By collaborating with various business partners, we organize workshops on fire safety and pest control, empowering residents to gain knowledge and master self-rescue techniques. Experienced volunteer experts provide services to the community in a mentoring format, allowing the learned knowledge to be applied practically and giving back to the community.

The "Happy Parents Mutual Support Network" and "Happy Family Repair Team" have become vital community assets. Families that volunteers continuously engage with gradually transform into core volunteers, promoting mutual assistance between families and the community. This advances a culture of support and collaboratively builds a happy community.



大埔浸信會慈惠基金 Tai Po Baptist Charity Fund

# 滿埔關懷——社區支援服務

## Caring for Tai Po-Community Support Services

滿埔關懷是由大埔浸信會資助的多元化社區支援服務，包含多項元素：

A multifaceted community support initiative sponsored by Tai Po Baptist Church of numerous elements:



### 1. 「幸福加油站」家庭照顧者支援計劃 “Happiness Station” Family Caregivers Support Program

以多元化活動來支援基層家庭身心靈需要，凝聚區內基層家長。以社工的專業配合外展區內照顧者，靈性上的栽培，結網於大埔浸信會，弟兄姊妹以同行者身份陪伴照顧者。

Diversified activities to support the wellness of underprivileged families, to unite target families in the district, with the support of social work professions and spiritual support of the Church.

#### 服務形式 Service Type:

- 課託天地：功課及學習支援服務
- 家長互助幸福小組
- SEN 照顧者喘息空間
- Learning Zone: Homework and learning support services
- Parent Mutual Support Group
- Breathing Space for SEN Carers

服務人次 Number of Service Visits: **500+**

### 2. 「埔浸橋」家訪 Home Visits by Tai Po Baptist Church's Volunteers

集結一眾教會滿有愛心的義工們，定期上門探訪及電話關顧區內有需要的獨居長者或是貧乏的雙老家庭。義工們及長者在長時間的交往下建立深厚的互信互愛關係，為長者的晚年建構安全網和帶來溫暖。

Assembling a band of loving volunteers from churches, we organized regular home visits and phone calls to care about singleton elderly or double-aging families within the community. Under prolonged interaction, volunteers and seniors developed a relationship characterized by mutual trust and love, therefore forming a safety network and manifesting love for old people during their later life.



服務人次 Number of Service Visits: **200+**

### 3. 「社區客廳」幸福休息站 “Community Living Room” Happiness Rest Cafe

為大埔區內劏房家庭優先提供如客廳般的共享空間，以照顧者及學童友善的設備回應身心靈需要，凝聚大埔區內的不同家庭。

**內容包括：**「幸福休息站」、「幸福健身室」、「幸福廚房」、「幸福 Party Room」、「幸福閱讀閣」

提供照顧者友善休憩空間，包括身心靈主題小組活動及工作坊、預約式設備及服務（如繪本桌遊借用、拉筋用品、電影觀賞、樂器設備、提供輕食及花茶等），由街坊義工支援學童學習及發展需要。



Priority will be given to providing living-room-like shared spaces to families living in subdivided flats in Tai Po District, with caregiver- and child-friendly facilities to meet their physical, mental and spiritual needs, bringing together different families in Tai Po District.

**Initiatives:** “Happiness Rest Cafe”, “Happy Fitness Room”, “Happy Kitchen”, “Happy Party Room”, “Happy Reading Room”

Providing a caregiver-friendly leisure space, including mind-body-spirit themed group activities and workshops, pre-booked equipment and services (such as story books and boardgames for borrowing, stretching supplies, movie viewing, musical instruments, light meals and scented tea, etc.), and neighborhood volunteers to support the learning and development needs of students.

服務人數 Number of People Served: **200+**

### 4. 「義人同行」社關課程 “Walking with the Volunteers” Social-concern Course

根據聖經裏耶穌對人的關懷及輔道中學習關懷自己和他人的情緒，建立健康界綫，使用簡單輔導技巧並透過實踐作出反思。

Following Jesus' model of care in the Bible, we learn to understand emotions (both ours and others'), set healthy limits, use basic helping skills, and reflect on our experiences.

#### 課程包括

- 生命故事分享
- 輔導技巧
- 參觀牛潮浸使命空間
- 學員分享
- 畢業典禮
- Course includes:
- Sharing life stories
- Counselling skills
- Visit “The Corner”
- Students' sharing
- Graduation Ceremony



參與人數 Number of Participants: **12**

### 5. 身心靈同行計劃 “Mind-Body-Spirit Themed” Program

**服務對象：**大埔區內有需要的基層家庭、教會內有需要的弟兄姊妹

**服務理念：**以親子活動等發展性活動擴闊清貧家庭視野，活動配合社工介入及專業解說，加強家庭親子互動及加強親子處理衝突的技巧；在靈性層面，計劃中邀請教牧及同行弟兄姊妹透過活動過程與街坊建立關係及分享見證，一同享受神所創造大自然的美好；社工在計劃過程中支援清貧家庭的情緒需要，亦提供跟進及轉介。

#### 服務形式：

- 1) 身心靈同行之旅（與教會團契及外展區協作）；
- 2) 提供即時情緒支援及轉介（街坊 / 由教牧轉介人士 / 清貧家庭）

**成效：**舒緩清貧家庭疫情下的親子張力，適時提供身心發展性活動、情緒支援及轉介，配合外展區物資及靈性上支援，以全面關懷有需要家庭。



**Service Target:** Grassroots families in need in Tai Po District, brothers and sisters in need in the church

**Service Concept:** Developmental activities such as parent-child activities are used to broaden the horizons of poor families. The activities are coordinated with social workers' intervention and professional explanations to strengthen family parent-child interaction and enhance parent-child conflict management skills. On the spiritual level, the program invites pastors and fellow brothers and sisters to build relationships and share testimonies with the neighbors through the activities, and enjoy the beauty of nature created by God together. Social workers support the emotional needs of poor families during the program and provide follow-up and referrals.

#### Service Format:

- 1) “mind-body-spirit themed” Program (in collaboration with church fellowships and outreach service);
- 2) Provide immediate emotional support and referral (neighbors/people referred by pastors/poor families)

**Effectiveness:** Alleviate parent-child tensions in poor families during the pandemic, provide physical and mental development activities, emotional support and referrals in a timely manner, and provide comprehensive care for families in need with material and spiritual support in outreach areas.

服務人次 Number of Service Visits: **841人**

#### 社會效益 Social Impact

促進教會與社會服務的合作，擴大受惠群眾，同時在關懷與實踐上互補

提供照顧者身心靈放鬆空間，減少家庭張力

To promote cooperation between the church and social services, to expand the number of beneficiaries, and to complement each other in care and practice.

Providing caregivers with a space to relax physically, mentally and spiritually, and reduce family tension.



兒童發展基金 Child Development Fund

# 「邁埔向前·童夢同行」及「埔向晴 TEEN」師友同行計劃



## “Move Forward with a Dream” & “Marching to the Bright Sky” Mentorship Programme



為期三年的「邁埔向前·童夢同行」師友計劃已於 2024 年 10 月完結，因着計劃帶來的正面果效，以及基金的支持認可，本機構於 2024 年 11 月緊接着舉辦第二屆師友同行計劃，並取名為「埔向晴 TEEN」師友同行計劃。

計劃元素如同第一屆，讓學生透過活動參與及運用儲蓄以探索興趣及發展所長。本屆共有 60 位學生參加，並在大埔浸信會、香港教育大學及線上義工平台招募了 46 位成長導師，繼續與學生同行成長。

The three-year “Move Forward with a Dream” mentorship program concluded in October 2024. Due to the program’s excellent outcomes and the recognition and support from the foundation, our organization launched a second round of the mentorship initiative in November 2024, under the new name “Marching to the Bright Sky” Mentorship Program.

The program structure remains largely the same. This cohort includes 60 students, and we’ve recruited 46 growth mentors through Tai Po Baptist Church, The Education University of Hong Kong, and an online volunteer platform to continue journeying alongside the students in their growth.



### 計劃特色

- 「堂、校、社」協作模式
- 計劃為期三年，包含三個主要元素，分別是「個人發展規劃」、「目標儲蓄」和「師友配對」。計劃包括為參與兒童、父母和成長導師（友師）安排培訓和增值活動，讓兒童在個人發展旅程有充足支援。
- 「目標儲蓄」為每位學生定立 \$200 的目標，為期兩年，機構為學生提供一比一配對捐款，學生一共有 \$14,400 基金。
- 「個人發展規劃」讓學生制定及實踐具體可行的發展目標，從而引發他們思考並確立較長遠的發展方向。
- 「師友配對」中為每名學生配對一名成年的成長導師，在三年計劃中為學生擴闊視野，建立自信和正面的價值觀，陪伴和帶領他們成長。

### Programme Highlights

- **A Collaborative Model:** Church, School, and Social Service
- The three-year programme focuses on three core components: Personal Development Plan, Targeted Savings, Mentorship. The programme also offers training and enrichment activities for students, their parents, and volunteer mentors, ensuring whole-person support for the children’s growth journey.

### Key Components

- **Targeted Savings:** Each student sets a personal saving goal of HK\$200 over two years. A 1:1 matching fund are provided for the savings, enabling each student to achieve the targeted savings of HK\$14,400.
- **Personal Development Plan:** Students are guided to set and pursue practical, achievable development goals. This process encourages long-term thinking and helps them chart a clearer path for their future.
- **Mentorship:** Each student is matched with an adult growth mentor. Over the three-year period, mentors help broaden students’ horizons, build self-confidence, and nurture positive values—offering consistent support and companionship.

### 參與對象 Beneficiaries



### 社會效益 Social Impact

- 提升學童自我效能感
- 建立師友家庭社區安全網
- 推動學童生涯及身心靈發展
- Enhanced students’ sense of self-efficacy
- Built a supportive network among mentors, students, and families
- Promoted students’ development in career planning, emotional well-being, and spiritual growth



# 總部

## Head Office



## 實習同學計劃及 CEO Global 合作

### Student Internships and Collaboration with CEO Global

本處一向重視未來社工培養，和政府及多間大學合作提供實習機會，對於修讀社工系及非社工系同學有不同的實習安排。本處亦相當重視同學的實習體驗成果，提供相應崗位的指導及督導，期望能為社會培養認識社區需要、了解專業的畢業生。

此外我們很重視領袖培訓，參與 CEO Global 的大學生領袖計劃。CEO Global 的學分課程和 22 所世界知名大學合作，在各高校課時以外，安排一系列的訓練，由現職及退休企業高管手把手的幫助學生成為以誠信為本的服務式領袖。本處本年與該機構合作，提供其參加者在本處研調的機會，並為本處完成拍攝服務介紹短片。



Our organization has always placed great importance on cultivating future social workers. In collaboration with the government and multiple universities, we provide internship opportunities with different arrangements tailored to students from social work and non-social work programs. We also highly value the outcomes of these internships, offering appropriate guidance and supervision for each role to help nurture graduates who understand community needs and possess professional knowledge.

In addition, we place strong emphasis on leadership development and participate in the **CEO Global University Leadership Program**. This credited program collaborates with 22 globally renowned universities and provides a series of training sessions outside of regular coursework. These sessions are led by current and retired corporate executives who mentor students to become integrity-driven, service-oriented leaders.

This year, we partnered with CEO Global to provide participants with research and development opportunities within our organization, and they successfully completed a short video introducing our services.





# 訓練發展與員工活動

## Staff Development Activities

本處全年舉行多次員工拓展活動，為各同事提供持續學習及進修、相互了解、使命磨合的機會。除了提高服務的意識和技巧，亦重視團隊合作和使命的堅持，祈能為香港發光發熱。

Our organization holds different types of staff development activities throughout the year, providing colleagues with opportunities for continuous learning, skill enhancement, mutual understanding, and alignment with our mission. In addition to improving service awareness and skills, we also emphasize teamwork and perseverance in our mission, hoping to make a meaningful impact in Hong Kong.

### 2024 年度的機構日內容 2024 Institutional Day Events



FEB  
2月

▲ 項目及活動管理培訓  
Project and Event Management Training



▲ 2024 慶賀新春 New Year Party



MAR  
3月

▲ 海防博物館大旅行  
Museum of the war of resistance coastal defense Leisure Day Trip



▲ 赤柱一天遊 Day Tour in Stanley



APR  
4月

▲ 心理策略戰遊戲體驗日 Psychological Strategy Game Experience



JUNE  
6月

▲ 表達藝術工作坊 Expressive Arts Workshop



JULY  
7月

▲ 斑馬線體驗 ZebraGo Experience



▲ 高效傳意及溝通工作坊 Presentation and Communication skills



AUG  
8月

▲ 新員工導向日 Staff Orientation Day



OCT  
10月

▲ 沙盤遊戲治療體驗 Sandplay Therapy Experience



OCT  
10月

▲ HKMA 實務技巧分享內部培訓  
HKMA Practical Skills Sharing Internal Training



NOV  
11月

▲ MBTI 性格分析工作坊 MBTI Personality Analysis Workshop



NOV  
11月

▲ ICAC 防貪及防止賄賂講座  
ICAC Anti-Corruption & Anti-Bribery Seminar



DEC  
12月

▲ 員工聖誕聯歡暨祈禱會 Christmas Party & Prayer Meeting



# 周年聚餐

## Annual Dinner



本處每年底均舉行周年聚餐，讓同事在一年忙碌中，有機會彼此認識、建立團隊精神、放鬆一刻。本年項目眾多，社情多變，同工深感團結一致，上下齊心的重要。周年聚餐實在是共聚一堂的機會。會上更頒發長期服務獎，表揚那些多年同行，始終如一的伙伴。

At the end of each year, we holds an annual dinner, providing colleagues with an opportunity to connect, foster team spirit, and unwind amidst the year's busyness. Given the numerous projects and evolving social landscape this year, everyone deeply appreciates the importance of unity and collective effort. The annual dinner truly serves as a chance for everyone to come together. During the event, long-service awards are also presented to recognize and honor those dedicated partners who have walked alongside us for many years with unwavering commitment.



# 媒體報導

## Media Coverage



## 2024/08/26 香港電台 RTHK

香港電台的「社區參與廣播服務頻道」訪問了我們機構兩位照顧者 / 導師和康復服務副總主任葉希敏姑娘，談及我們的照顧者服務，以及照顧者如何改變，成為導師，幫助其他照顧者。同路人的生命經驗交流，細膩感人。





# 締造和諧「開心工作間」—— 關愛員工身心健康的貼心舉措

## Fostering a Harmonious “Happy Workplace” — Thoughtful Measures to Support Staff Well-being



大埔浸信會社會服務處始終秉持「以人為本」的理念，致力營造一個充滿活力與關懷的「開心工作間」。我們深信員工的幸福感與工作效率息息相關，因此特別推行多項創新措施，全方位支持員工的身心靈健康。

我們的努力獲得了社會各界的認可，包括榮獲「香港提升快樂指數基金」頒發的「開心機構認證」，以及獲授權使用「為你加家好僱主」標誌，肯定了我們在推動家庭友善政策及建立正向工作環境方面的卓越表現。

Tai Po Baptist Church Social Service has always upheld a people-centered philosophy, striving to cultivate a vibrant and caring “happy workplace.” We firmly believe that employee well-being is closely linked to workplace efficiency, and have therefore implemented a range of innovative initiatives to holistically support staff’s physical, mental, and emotional health.

Our efforts have been widely recognized by the community, including being awarded the “Happy Organization Certification” by the Hong Kong Happiness Index Foundation, and authorized to display the “Good Employer” logo — affirming our outstanding commitment to promoting family-friendly policies and a positive work culture.



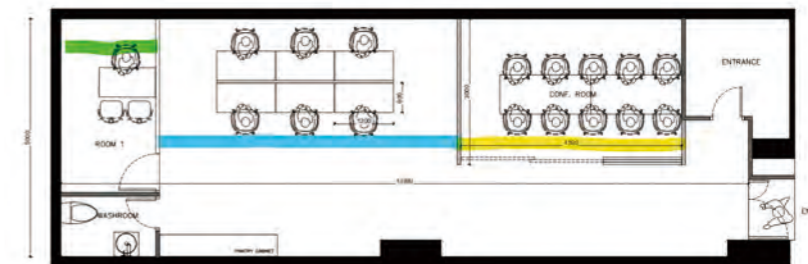
在具體措施方面，我們實施的「家庭友善工作措施」允許同事在適當情況下攜帶小朋友或寵物返公司，不僅減輕了員工照顧家庭的負擔，更透過輕鬆互動的工作環境，促進團隊間的凝聚力與正向溝通。

我們將繼續努力，為員工創造更美好的工作環境，讓服務處成為一個充滿正能量與幸福感的場所。

As a concrete example, our family-friendly measures allow colleagues to bring their children or pets to the office when appropriate. This not only eases the burden of caregiving but also helps create a relaxed and interactive atmosphere that fosters team bonding and positive communication.

We will continue striving to create an even better work environment, making our organization a place filled with positive energy and happiness.

## 新辦公室 New Office in Kowloon



2024 年底本會委員提供一個位處荔枝角，面積有 700 來呎的空置單位，簡單改造後可成為辦公室，同時機構正考慮改名，以擴大服務對象範圍，提升服務面向，期望新辦公室有助加強發展九龍區學校服務，及機構其他服務發展。

年底開始進行裝修，計劃 2025 年初啓用。

At the end of 2024, a vacant unit of approximately 700 square feet located at Lai Chi Kok was offered by a member of the organization. After some simple renovations, it will be transformed into an office. At the same time, the organization is considering removing in order to broaden its service scope and enhance the reach of its initiatives. It is hoped that the new office will strengthen the development of school services in the Kowloon area, as well as support the growth of the organization’s other programs.



# 主要服務項目一覽

## List of Major Projects

地區綜合服務 Community Integrated Services		
資助單位 / 撥款機構 Sponsors	基金 / 計劃名稱 Projects	服務人次 No. of Service Visits
兒童發展基金 The Child Development Fund	「邁埔向前」及「埔向晴 TEEN」師友同行計劃 Move Forward with a Dream" & "Marching to the Bright Sky" Mentorship Programme	3,000
大埔浸信會慈惠基金 Tai Po Baptist Church Charity Fund	「滿埔關懷」社區支援服務 Caring for Tai Po-Community Support Services	2,053
社區投資共享基金 The Community Investment and Inclusion Fund	「幸福心房」基層家庭家居及成長支援計劃 Home Sweet Home : Household Development Project for Deprived Families	20,000
	部門其他服務及來訪	22,600
康復服務 Rehabilitation Services		
資助單位 / 撥款機構 Sponsors	基金 / 計劃名稱 Projects	服務人次 No. of Service Visits
政府社創基金 (SIE), 利希慎基金 Social Innovation and Entrepreneurship Development Fund, Lee Hysan Foundation	斑馬線 ZebraGo	1,094
大埔浸信會慈惠基金 Tai Po Baptist Church Charity Fund	SEN 滿埔關懷 SEN at Tai Po	1,120
社會福利署 Social Welfare Department	小學生課餘託管服務 After School Care Programme (ASCP) for Primary School Student	2,151
社區投資共享基金 The Community Investment and Inclusion Fund	耆盼友里： 居家安老· 共建認知障礙友善社區計劃 Neighbour-OLD: Ageing-in-place - The Programme for Building a Dementia- friendly Community	2,600
精神健康諮詢 委員會 + 離島扶輪社 Advisory Committee on Mental Health + Rotary Club of Channel Islands	「星 SEN 相惜」— 大埔及北區 特殊教育需要照顧者全方位支援計劃 Stars-link - Holistic Support Service for SEN caregivers of Tai Po and Northern District	2,802
社會福利署大埔及北區分區福利辦事處 Tai Po and North District Social Welfare Office, Social Welfare Department	照顧者美麗旅程 The Beautiful Journey of Carers	2,640
攜手扶弱基金 Partnership Fund for the Disadvantaged	飛凡兒童計劃 SEN's Got Talent !	2,626
社會創新及創業發展基金 The Social Innovation and Entrepreneurship Development Fund	「友智識」長者數碼共融計劃 "Smart Silver" Digital Inclusion Programme for Elders	未正式開始
	部門其他服務及來訪	18,000

## 學校社會工作服務 School Social Work Services

資助單位 / 撥款機構 Sponsors	基金 / 計劃名稱 Projects	服務人次 No. of Service Visits
	服務學校數字 No. of Schools Using Our On-Campus School Social Work Service	28間
夢想成真基金會 及 離島扶輪社 Dreams Come True Foundation Limited & Rotary Club of Channel Islands	點亮飛凡獎學金計劃 Illuminating Extraordinary Talent Scholarship	570
香港救助兒童會 Save the Children Hong Kong	牽手童行 —— 學童精神健康促進計劃 Children Mental Wellness Enhancement Program	10,550
AEON 永旺 AEON Stores (Hong Kong) Co., Limited	AEON Dream 永旺七色花體驗營 AEON Dream Service Learning and Career Planning Camp	100
	家長教育課程 (校本) Parent Education Program (School Based)	2,380
	駐校服務總服務人次 School Social Work Visits	57,660

## 其他大型活動 Major Activities

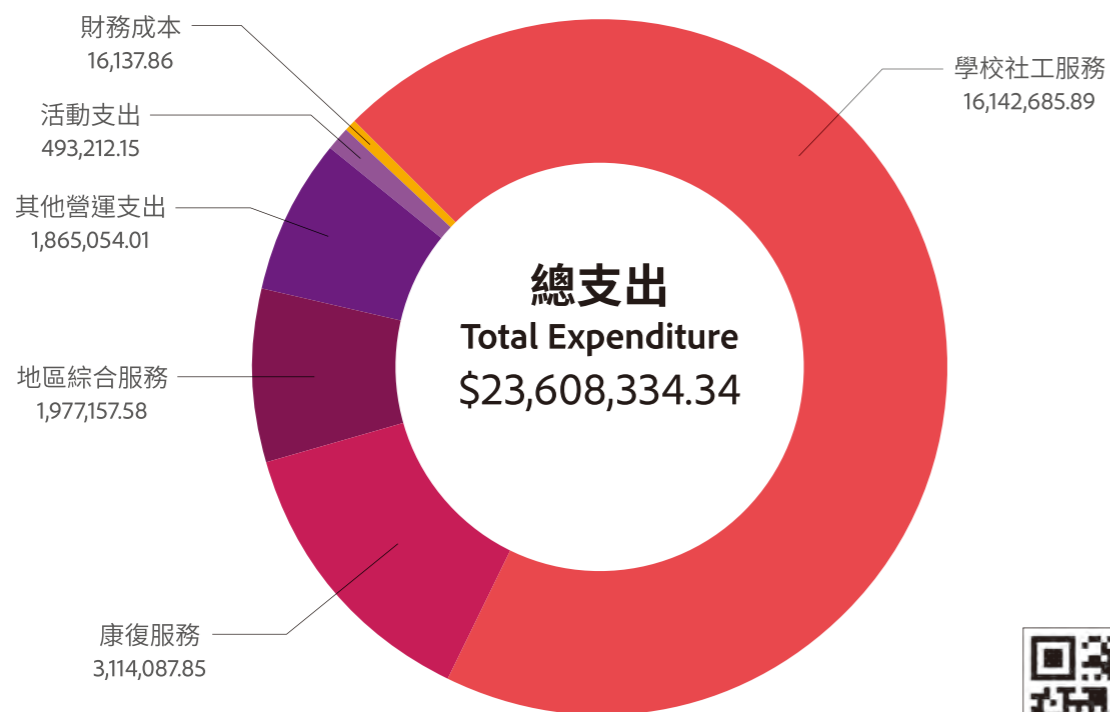
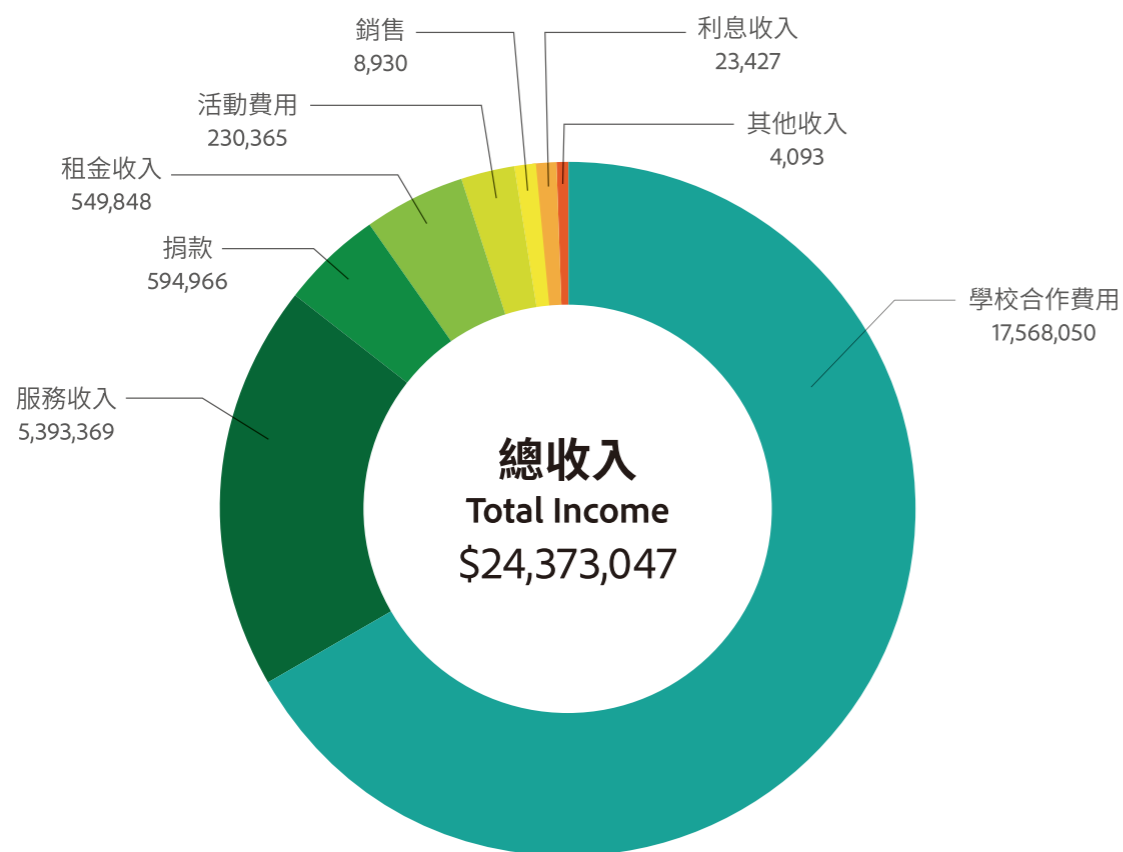
55,458





# 財務報告

## Financial Reports



本年度營運盈餘  
Operating Surplus **\$764,712.63**

此財務報告為節錄，  
如欲參閱完整 2024 周年帳目，  
請掃描二維碼瀏覽。



# 鳴謝 Acknowledgements

## 政府部門 Government Departments

香港特別行政區政府 民政事務總署  
香港特別行政區政府 民政及青年事務局  
大埔及北區家庭及兒童福利服務協調委員會  
大埔及北區康復服務協調委員會  
家庭及兒童福利科大埔及北區福利辦事處  
香港特別行政區政府 醫務衛生局  
香港特別行政區政府 教育局  
香港特別行政區政府 精神健康諮詢委員會  
香港特別行政區政府 勞工及福利局  
社會福利署  
南大埔綜合家庭服務中心  
北大埔綜合家庭服務中心  
香港房屋協會  
香港房屋委員會

Home Affairs Department  
Home and Youth Affairs Bureau  
Tai Po and North District Co-ordinating Committee on Family and Child Welfare Services  
Tai Po and North District Co-ordinating Committee on Rehabilitation Service  
Family & Child Protective Services Unit (Tai Po & North)  
Health Bureau  
Education Bureau  
Advisory Committee on Mental Health  
Labour and Welfare Bureau  
Social Welfare Department  
Tai Po (South) Integrated Family Service Centre  
Tai Po (North) Integrated Family Service Centre  
Hong Kong Housing Society  
Hong Kong Housing Authority

## 社會福利界 Social Welfare Sector

香港社會服務聯會  
照顧者易達平台  
九龍城浸信會社會服務處  
大埔浸信會  
大埔浸信會信徒裝備中心  
浸信會愛羣社會服務處  
大埔浸信會區張秀芳長者鄰舍中心  
香港傷健協會  
香港救助兒童會  
基督教康健信義會太和青少年綜合服務中心  
大埔地區康健站  
香港警察隊基督教以諾團契  
電燈膽  
賽馬會流金滙  
薈色園  
大埔浸信會富亨浸信會  
銘恩中心  
南亞路德會家庭網社會服務中心  
香港婦女中心協會賽馬會太和中心  
仁愛堂彭鴻輝長者鄰舍中心  
大埔浸信會欣悅天地  
薈色園主辦可康耆英鄰舍中心  
救世軍大埔長者社區服務中心  
鄰舍輔導會「好鄰舍@大埔」  
富蝶邨(第二期)地區支援網絡計劃  
香港婦女中心協會賽馬會太和中心

The Hong Kong Council of Social Service  
CAREREPS Platform  
Kowloon City Baptist Church Social Services  
Tai Po Baptist Church  
Non-profit organization  
Baptist Oi Kwan Social Service  
Tai Po Baptist Church Au Cheung Sau Fong Neighbourhood Elderly Centre  
Hong Kong PHAB Association  
Save the Children  
ELCHK, Tai Wo Integrated Youth Service Centre  
Tai Po District Health Centres Express  
Hong Kong Disciplined Services Christian Fellowship  
Mega Inspire  
Jockey Club Cadenza Hub  
Sik Sik Yuen  
Fu Heng Baptist Church  
Remembrance of Grace Community Service Centre  
Family Net Social Service Centre  
Hong Kong Federation of Women's Centres Jockey Club Tai Wo Centre  
Pang Hung Cheung Neighbourhood Elderly Centre  
Charis Circle  
Sik Sik Yuen Ho Hong Elderly Neighbourhood Centre  
Salvation Army Tai Po Elderly Community Service Centre  
Neighbourhood Advice-Action Council "Good Neighbour@Tai Po" -  
Fu Tip Estate (Phase 2) District Support Network Project  
Hong Kong Federation of Women's Centres Jockey Club Tai Wo Centre  
New Life Psychiatric Rehabilitation Association -  
Mobile Van for Publicity Service on Mental Wellness  
Social Career  
Voltra  
Fullness Social Enterprises Society Limited  
Fruit Garden Social Enterprise  
Hong Kong General Chamber of Social Enterprises  
GREEN@TAI PO  
woopie

社職  
義游  
豐盛社企學會  
果園社企  
香港社會企業總會  
綠在大埔  
和悅社會企業有限公司



## 鳴謝 Acknowledgements

### 慈善基金會 Charity Foundation

大埔浸信會慈惠基金	Tai Po Baptist Charity
社區投資共享基金	Community Investment and Inclusion Fund
兒童發展基金	Child Development Fund
夢想成真基金會	Make-A-Wish Hong Kong
攜手扶弱基金	Partnership Fund for the Disadvantaged
利希慎基金	Lee Hysan Foundation
社會創新及創業發展基金	Social Innovation and Entrepreneurship Development Fund
懲教社教育基金	CSDCU Education Fund

### 商界機構 Business

大埔扶輪社	Rotary Club of Tai Po
離島扶輪社	Rotary Club of Channel Islands
新界扶輪社	Rotary Club of New Territories
睿賢扶輪社	Rotary Club of Sapience
AEON 永旺 (香港) 百貨有限公司	AEON Stores (Hong Kong) Co., Ltd.
啓槌體藝協會	K. Tree Sports And Arts Association
Hello Cocoa	Hello Cocoa
滙科系統有限公司	BASCO Technology Limited
点点綠	Greenodt dot
王朝酒業集團有限公司	Dynasty Fine Wines Group Limited
置佳物業服務有限公司	Top Property Service Co. Ltd.
愛·營點	Love · Camp
尚春堂	Optimal Health
偉易達企業服務有限公司	VTech Corporate Services Ltd.
偉易達電子產品 (香港) 有限公司	VTech Electronics (Hong Kong) Ltd.
CEO Global	CEO Global
時代集團控股有限公司	Sitoy Group
陽光照明有限公司	Sunshine Lighting Limited
傲驎媒體	OKI Media
香港鐵路有限公司	MTR Corporation Limited
中國銀行香港	Bank of China (Hong Kong)
東亞銀行有限公司	The Bank of East Asia Limited
大埔超級城	Tai Po Mega Mall
香港管理專業協會	Hong Kong Management Association
羅氏大藥廠香港有限公司	Roche Hong Kong
寵物達人	
奇華餅家	Kee Wah Bakery Limited
JDesignStudio	JDesignStudio
婦女國際康體護理發展總會	
國際研科教育學院	AQUA tech education academy Ltd.
養生美容專家	Aqua Pro Beauty Limited
Art Area 髮廊	
森那美汽車集團	Sime Motors Group
源意念制作有限公司	Visual Idea Ltd.
中天多媒體製作有限公司	ZTM Zhong Tian Multimedia Production Ltd.
正明 (香港) 會計師事務所有限公司	Solarmark (HK) C.P.A. Co. Ltd.
智勇商傳	Solomon Hong Kong
所羅門印刷方案有限公司	Solomon Printing Solutions Limited

### 個人及友好 Individuals and Friends

大埔浸信會唐樓街坊特工隊	盧健翀先生	黃偉樂律師	趙兆龍先生
陳麗珠女士	郭嘯天牧師	謝志華先生	陳啟明先生
譚麗儀小姐	林國興律師	陳錦嫦女士	五旬節于良發小學校友翁卓喬、陳天行同學

### 教育界 Education

香港教育大學特殊學習需要與融合教育中心	Institute of Special Needs and Inclusive Education
香港專業教育學院 (沙田) 幼兒、長者及社會服務	IVE Childcare, Elderly and Community Services
新界校長會	New Territories School Heads Association
大埔區小學校長會	Tai Po Primary School Headmasters Conference
北區小學校長會	North District Primary School Headmasters Conference
香港浸信會幼稚園教育協會	Hong Kong Baptist Kindergarten Education Convention Ltd
香港浸信會聯會專業書院	Academy of the Baptist Convention of Hong Kong
香港浸信會神學院	Hong Kong Baptist Theological Seminary
大埔浸信會公立學校	Tai Po Baptist Public School
德萃小學	St Hilary's School
漢師德萃學校	VNSAA St Hilary's School
神召會德萃書院 (小學部)	Assemblies of God St Hilary's College (Primary Section)
大光德萃書院	Tai Kwong Hilary's College
大埔循道衛理小學	Tai Po Methodist Primary School
金錢村何東學校	Kam Tsin Village Ho Tung School
富亨浸信會呂郭碧鳳幼稚園	Fu Heng Baptist Church Lui Kwok Pik Fung Kindergarten
三水同鄉會禰景榮學校	Sam Shui Natives Association Huen King Wing School
田家炳中學	Tin Ka Ping Secondary School
香港特殊教育學校議會	
香港教育大學	The Education University of Hong Kong
九龍城浸信會禧年 (恩平) 小學	Kowloon City Baptist Church Hay Nien (Yan Ping) Primary School
神召會德萃書院 (鑽石山)	AOG St. Hilary's College
佛教慈敬學校	Buddhist Chi King Primary School
佛教林炳炎學校	Buddhist Lam Bing Yim Memorial School
胡素貞博士紀念學校	Dr. Catherine F. Woo Memorial School
保良局田家炳千禧小學	PLK Tin Ka Ping Millennium Primary School
保良局莊啟程第二小學	PLK Vicwood KT Chong No. 2 Primary School
仁愛堂田家炳小學	Yan Oi Tong Tin Ka Ping Primary School
五旬節于良發小學	Pentecostal Yu Leung Fat Primary School
大埔舊墟公立學校	Tai Po Old Market Public School
大埔崇德黃建常紀念學校	Sung Tak Wong Kin Sheung Memorial School
打鼓嶺嶺英公立學校	Ta Ku Ling Ying Public School
馬鞍山靈糧小學	Ma On Shan Ling Liang Primary School
上水東莞學校	Tung Koon School (Sheung Shui)
東華三院群芳啟智學校	TWGHs Kwan Fong Kai Chi School
香港培道小學	Pooi To Primary School
十八鄉鄉事委員會公益社小學	Shap Pat Heung Rural Committee Kung Yik She Primary School
大埔浸信會幼稚園	Tai Po Baptist Kindergarten
大埔浸信會幼稚園蓮頭塘邨分校	Tai Po Baptist Kindergarten Wan Tau Tong Estate Branch
浸信宣道會呂明小學	Conservative Baptist Lui Ming Choi Primary School
聖公會阮鄭夢芹小學	SKH Yuen Chen Maun Chen Primary School
香港華人基督教聯會真道書院	HKCCCU Logos Academy
東華三院徐展堂學校	TWGHs Tsui Tsin Tong School

### 傳媒伙伴 Media

香港 01	HK01
經濟日報	HKET
時代論壇	Christian Times
AM730	AM730
低聲道	The Voice
基督日報	The Gospel Herald
香港電台	Radio Television Hong Kong



# 捐款方法 Donation Methods

## 銀行戶口 按月自動轉賬 Monthly Auto Transfer

只適用於按月捐款，請致電 / 電郵向本處查詢  
For monthly donations only, please contact us by phone or email for further assistance.

### Tai Po Baptist Church Social Service

中國銀行賬戶 Bank of China (Hong Kong) : 012-796-1-017722-8

東亞銀行賬戶 Bank of East Asia : 015-151-10-28821-3

- 請於存款收據上寫上姓名、聯絡電話  
Please write your name and contact number on the deposit receipt.
- 請將存款記錄截圖以電郵 / 傳真 / WhatsApp 至本處  
Kindly send a screenshot of the deposit record to us via email, fax, or WhatsApp.

\* 因應不同銀行及手機 APP 字數所限，如出現戶口名字不符合請試輸入  
Due to character limits imposed by different banks and mobile apps, if the account name does not match exactly, please try entering:

TaiPo Baptist Church Social Service

## 轉賬 Transfer

## 劃線支票 Crossed Cheque

- 抬頭「大埔浸信會社會服務處」  
Please make the cheque payable to "Tai Po Baptist Church Social Service"
- 於支票背面填上姓名、聯絡電話  
Kindly write your name and contact number on the back of the cheque.
- 請將支票郵寄或親臨大埔浸信會社會服務處遞交支票。  
Please submit the cheque by mail or in person to the Tai Po Baptist Church Social Service office.

## 現金 Cash

請親臨本處捐款，請勿郵寄現金  
Please make your donation in person at our office. Do not send cash by mail.

### 線上捐款 Online Donation



AlipayHK



其他付款方式  
Other Payment Ways

- 備註  \$100 或以上可申請收據作扣稅之用，請把轉帳收據及上列表格郵寄或傳真到本處  
Donations of HK\$100 or above are eligible for an official receipt for tax deduction purposes.  
Please send the bank transfer receipt along with the completed form to our office by mail or fax.
- 本人不需要捐款收據。 I do not require a donation receipt.

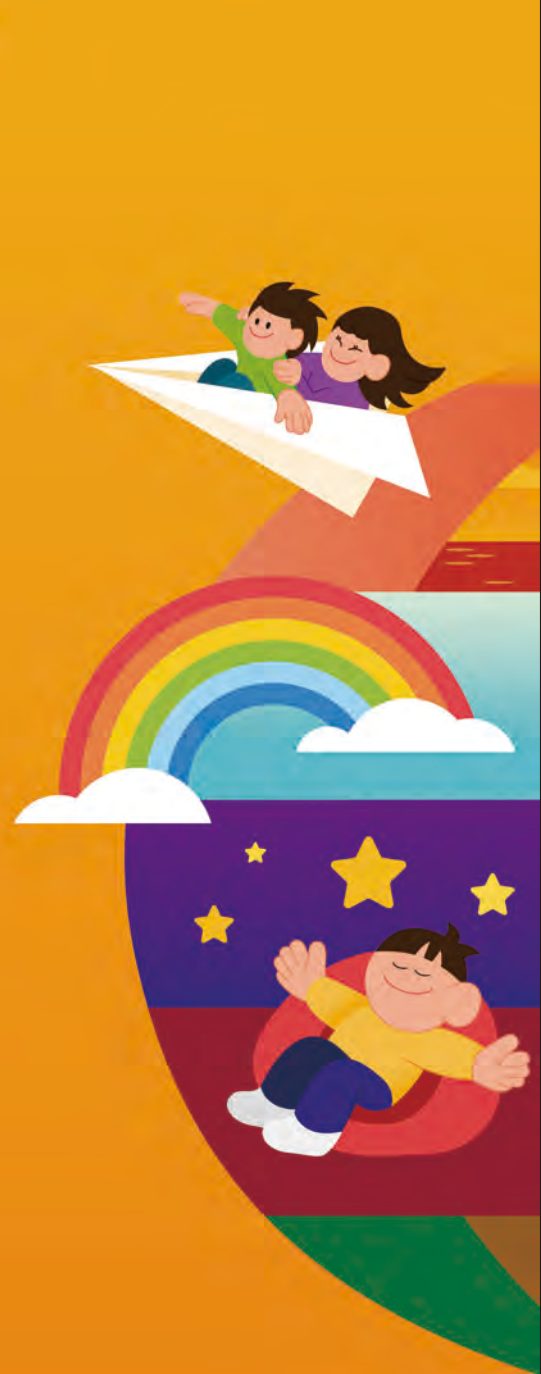
### 查詢 Enquiry

電郵 Email [info@tpbcss.org](mailto:info@tpbcss.org) | 電話 Telephone 2656-6680 | 傳真 Fax 2656-2220 | WhatsApp 5663-0146

地址 Address 大埔富亨邨亨昌樓地下 Ground Floor, Heng Cheong House, Fu Heng Estate, Tai Po, N.T.  
九龍長沙灣永康街 29 號兆威工業大廈 502 室 Room 502, Siu Wai Industrial Centre, 29 Wing Hong St., Cheung Sha Wan

感謝閣下願意支持本處服務，願主祝福你！ Thank you for your willingness to support our services. May the Lord bless you!





## 大埔浸信會社會服務處

Tai Po Baptist Church Social Service

電郵 Email [info@tpbcss.org](mailto:info@tpbcss.org)

電話 Telephone **2656-6680**

地址 Address **大埔富亨邨亨昌樓地下**  
Ground Floor, Heng Cheong House,  
Fu Heng Estate, Tai Po, N.T.

傳真 Fax **2656-2220**

WhatsApp **5663-0146**