



大埔浸信會社會服務處
Tai Po Baptist Church Social Service



以愛燃亮
Enlightening with us
共譜恩光
Embracing the love



Centre for Children with Special Educational Needs

Charis Parent Integrated Service Centre

Professional services and training | Carers Support | Developing Potentials

Service brochure 2023



Love each other
John 15:12



Facebook page

Service brochure 2023

Table of contents

 **Professional
services &
training**

 **Carers
Support**

1	<i>3 Major Services</i>	9	<i>Speech Therapy</i>
2	<i>Introducing our Professional Teams</i>	10	<i>Play Therapy</i>
3	<i>SUPER ENERGY</i>	11	<i>Occupational Therapy</i>
4	<i>A.C.T.</i>	12	<i>Music Therapy</i>
5	<i>Enrollment Notes</i>	13	<i>Creative Arts Therapy</i>
6	<i>Notice for Rainstorm and Typhoon</i>	14	<i>Sex Therapy</i>
7	<i>Membership Notes</i>	15	<i>Aromatherapy</i>
8	<i>Assessment Service by Educational Psychologists</i>	16	<i>Marriage and Family Therapy</i>
		17	<i>Mama & Papa's Club</i>





**Centre for Children with
Special Educational Needs**

Charis Parent Integrated Service Centre

3 Major Services

Professional services and training | Carers Support | Developing Potentials





Centre for Children with
Special Educational Needs

Charis Parent Integrated Service Centre



Professional Teams





**Centre for Children with
Special Educational Needs**

Charis Parent Integrated Service Centre



SuperENergy

Our centre commits itself to helping children of different capacities to unleash their potential and to concern with the emotional health of carers.

**SuperENergy = Unlimited Energy
Boundless Potentials**



雲雲 Mac Mac

Holding his beloved watering bucket with his own hand, Mac Mac quietly irrigates and encourages the world every day. This resembles the act of SplD people, who contribute silently to create hopes for everyone and themselves.



風風 Windy

Windy is a tornado that acts rapidly but aimlessly, looting whatever he sees along his trajectory. This symbolizes one's curiosity about everything in the surrounding.



星兒 Starry

With extraordinary memory and creativity, Starry imagines the world according to his own will. This represents the spectacular world owned by ASD children. The rainbow and star above his head are things that cannot be discovered at the same time in the real world.





SEN Carers'

Self Actualisation



A= Ability & Art
C= Carer's career
T= Talent

- To substantially promote public concern in the community for the spiritual need of carers
- To proactively arrange large-scaled fairs, mutual aid groups and emotional alleviation workshops for carers
- To encourage carers to express their voices and empower themselves

Carers X Slash “斜槓”




Slash “斜槓” is no longer a term exclusively owned by young people. After receiving in-depth trainings from our experienced instructors, careers can also fulfill their ingrained needs for self-actualization – taking their roles as careers and fostering their career and hobbies.



Enrollment Notes

- 1) During the first session of each activity, please show your valid membership card/activity's receipt to our Centre's staff for verification.
- 2) Please attend the activity according to details on the receipt. The Centre does not deliver personal reminders to individual participants if the event's schedule remains unchanged.
- 3) There are no make-up session any class or group.
- 4) To avoid disturbances to the ongoing activity, parents are not allowed to spectate, take photos or record video at the venue.
- 5) Parents must not leave their children alone at the centre. Please see them to the centre and pick them up afterwards on time. Parents are responsible for the safety of their children once the activity is finished.
- 6) If an activity has to be cancelled due to adverse weather or administrative reasons, the centre will, by all means, arrange a make-up session or refund. For details please refer to Notice for Rainstorm and Typhoon.
- 7) The centre is not responsible for the purchasing of teaching materials used by instructors. Student or parents should contact their instructors directly if needed.
- 8) Please read through the content of the notice and verify with the latest activity information (which may differ from the notice) posted on the notice board in the centre.
- 9) For alumni who wish to renew their enrollment, please submit the application within the third week in every month. There is no reservation of seats while the quota lasts. Sorry for any inconvenience caused.
- 10) The activity and fee for classes and groups are subjected to change depending on the number of sessions taken in individual month. The application dates for certain classes and groups vary slightly. Please refer to the notice for enrollment renewal posted in the hall of the centre.
- 11) If the intake for an activity is full, applicants may leave their personal information. The centre will consider arranging an additional class or group after reviewing the waiting status and coordinating with instructors.
- 12) Except for well-explained reasons, fees are charged every month/term. Trials are not available. Application fees for every month/term have to be paid in full even if the applicant cannot attend all sessions in certain month/term.
- 13) Participants must attend the event according to the schedule. Once the application fee is paid, students are not allowed to change their courses or transfer their seats to others. The centre does not offer any refund either. If the participant is unable to show up due to personal reasons, the centre will not provide any refund or make-up session for the related activity.
- 14) Participants/parents should retain the activity receipt until the completion of the event.
- 15) If the cheque submitted by an applicant cannot be successfully redeemed, the centre will charge an administration fee of HKD30.
- 16) Concerning students who have yet to pay their fees, our staff are authorized to request them to settle the payment before attending classes.

Notice for Rainstorm and Typhoon

Weather condition		Indoor activity	Outdoor activity
	T1 Standby Signal No.1	Go ahead as planned	Go ahead as planned
	13 Standby Signal No. 3	Go ahead as planned	Cancelled
	▲8 Standby Signal No. 8	Cancelled	Cancelled

- When the Red Rainstorm Signal or Standby Signal No. 1 is hoisted, indoor activities will go ahead as planned. Parents should evaluate the safety of the route travelling to the centre. If they decide to take leave for that particular session, the centre will not offer any refund.
- When the Red Rainstorm Signal or Strong Wind Signal No. 3 is hoisted during an activity and the weather is expected to worsen rapidly, activities set to take place or being held will be cancelled or terminated. Parents should pick up their children as soon as possible.
- If an activity is cancelled due to adverse weather - Black Rainstorm Signal or No. 8 Gale Or Storm Signal – the centre will return the fee for fee deduction when participants apply for another courses.
- Before heading for the centre, service users should observe the weather condition and evaluate the safety of the route travelling to us.
- If parents wish to apply for a refund, please inform the centre's staff within 3 months upon the completion of the activity. The reimbursement will be made in the form of crossed cheque. Please show the original activity receipt when you collect the cheque. For details please refer to Application for Refund.



 2656 6680



Notes for Members



Targets: SEN children and their carers

Membership type: Personal membership

Fee: Free-of-charge

Notice all activities held by the centre are designed for members. Participants must register themselves as members of the centre as well as CARER EPS Platform. If you wish to terminate your membership, please contact the centre via phone call.

Benefits

- Members of CARER EPS Platform receive information such as community offers, community events and support services.
- A gift is delivered to every newly registered and renewed member.
- Enjoy priority for receiving updates on the centre's events.
- Enjoy facilities in our centre and TPBCSS without charges, for instances, Sensory Play Corner, MAMA CAFE and MAMA & PAPA CLUB.
- Borrow board games and books/illustrations about parenting and enjoy services from Parent Resource Corner.
- Enjoy discounts for buying smart board games and illustration books.

The centre reserves all rights to revise the terms for members' discounts and benefits.

In the case of any dispute, the explanation by TPBCSS will be final.

Assessment by Educational Psychologists – Scope of services

The service conducts primary assessment and offers referral for children suspicious of having special educational needs (e.g., autism, dyslexia, AD/HD or behavioural-emotional problems) or for gifted children.

After going through primary assessment by our experts, the participant can be referred to related organizations for further follow-up if needed.

Intellectual Assessment

- Interview with parents
- Wechsler Intelligence Scale for Children (Four Edition) (Hong Kong)
- The Wechsler Adult Intelligence Scale (Four Edition) (Hong Kong)
- Educational Psychologist's Assessment
- Brief Summary



Autism or AD/HD Assessment for Children

- Interview with parents
- Clinical observation
- Intellectual/Development Ability Assessment/other assessment tools suggested by case management psychologist after examining the case
- Self-assessment questionnaire for parents/teachers
- Educational Psychologist's Assessment
- Brief Summary



Dyslexia Assessment

- Interview with parents
- Wechsler Intelligence Scale for Children (Four Edition) (Hong Kong)
- The Hong Kong Test of Specific Learning Difficulties in Reading and Writing for Primary School Students (Third Edition)
- The Hong Kong Test of Specific Learning Difficulties in Reading and Writing for Junior Secondary School Students (Second Edition)
- Educational Psychologist's Assessment
- Brief Summary



- Appointment has to be made if a follow-up interview with educational psychologists is needed. The hourly charge is HKD 1550.
- The above fee covers the cost of a brief summary. An additional \$ 1700 is required if you request a detailed assessment report.
- To apply for the above course, you must first register as a member of our centre and CARER EPS Platform.



Goals

- To compose appropriate individual training plans for children with speech and language development, instead of speech only
- To provide refined training services for children through therapeutic activities
- To help parents understand the stages of language development of children and enhance their skills in carrying out designated home practice, instead of enhancing communication skills of children again

Scope of Training

Comprehension Training

Interactive Communication

Oral Motor and Swallowing

Expression Ability

Pronunciation

Voice Training

Targets

1. Preschool kids, children, and teenagers with language development
2. Children associated with language development impairment

Instructor(s): registered speech therapist

Assessment fee: \$1200 (covering a brief summary)

Training fee: \$3000/4sessions Mon to Fri - Before 4.00pm
\$3500/4sessions Mon to Fri - After 4.00pm/Sat & Sun all

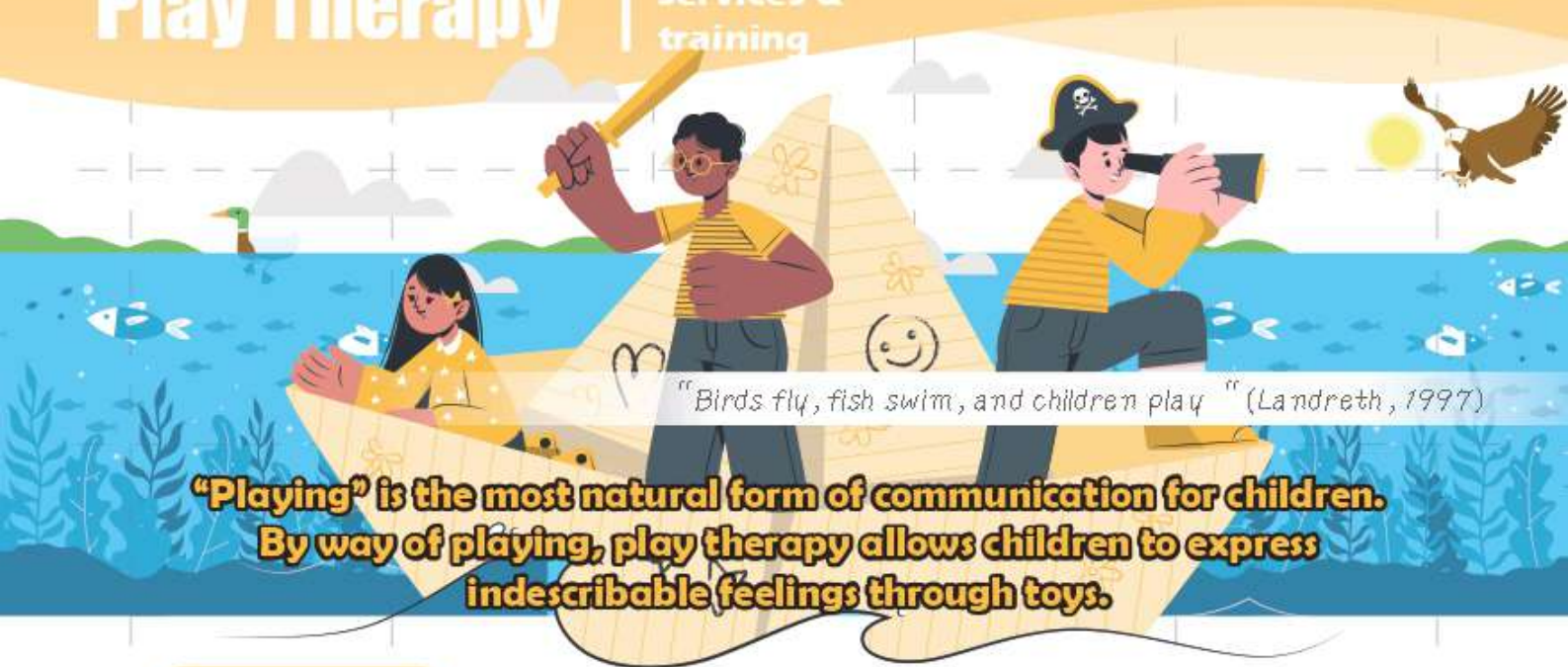
Each session lasts for 45 minutes

- An additional \$1700 is required if you request a detailed assessment report.
- Drop-in's are not available.
- To apply for the above course, you must first register as a member of our centre and CARER EPS Platform.



**Centre for Children with
Special Educational Needs**

Charis Parent Integrated Service Centre



"Birds fly, fish swim, and children play" (Landreth, 1997)

"Playing" is the most natural form of communication for children. By way of playing, play therapy allows children to express indescribable feelings through toys.

Goals

- Adopting child-centered play therapy, Play Therapy allows children to express their inner world without restraint;
- To improve self-confidence, sense of responsibility and problem-solving ability;
- To externalize inner anxiety and stress and to replay and handle inner feelings and thoughts
- To learn to vocalize themselves and deal with emotional issues in a socially acceptable manner

Targets

3 to 10 years-old children with emotional or behavioural difficulties

Content

- Including interviews with parents, children assessment and therapy services
- Play-centered counselling generally involves 8 – 12 sessions; the number may vary depending on individual cases.

Instructor(s): play therapist

fee: \$3000/ 4 sessions

Each session lasts for 45 minutes

- Drop-in's are not available.
- To apply for the above course, you must first register as a member of our centre and CARER EPS Platform.





Goals

To facilitate age-appropriate development, including cognitive, motor, sensory and psychosocial, thus enhancing health and wellness, also quality of time.

Scope of Training

Hand functions and hand writing skills

Self-care and life independence

Executive functions (attention, organization, problem solving, etc.)

Visual-perception & visual-motor skills

Sensory integration and processing

Targets

Young children, children and teenagers

Instructor(s): Registered occupational therapists

Assessment fee: \$1200 (covering a brief summary)

Training fee: \$3600/ 4 sessions

Each session lasts for 45 minutes

- An additional \$1700 is required if you request a detailed assessment report.
- Drop-in's are not available.
- To apply for the above course, you must first register as a member of our centre and CARER EPS Platform.





The course supports people's spiritual health through music. In the music therapy group, various techniques of music therapy are used, for instances, ensemble, singing, song writing, discussing lyrics, improvising, bodily movement and other art creating activities.

Major goals and effects

To improve social abilities including verbal and non-verbal expressions

To enhance social interaction ability

To maintain/strengthen cognitive ability and to boost concentration

To maintain/strengthen the use and coordination of gross motor and fine motor

To foster expression and management of emotions

To facilitate stress alleviation and self-articulation and to build self-confidence

Targets

Young children, children and teenagers

Instructor(s): registered music therapist

Training fee: \$3000/4 sessions

Each session lasts for 45 minutes

■ Drop-in's are not available.

■ To apply for the above course, you must first register as a member of our centre and CARER EPS Platform.





To bring forth positive whole person development for children through various forms of art creating activities, including dance, music, painting and drama games.

Major goals and effects

To facilitate children to express their emotions

To foster the sense of the self and body

To boost self-esteem, self-confidence and proactiveness

To improve social abilities

Targets Young children, children and teenagers

Instructor(s): registered creative arts therapist

Training fee: \$3000/4 sessions

Each session lasts for 45 minutes

- Drop-in's are not available.
- To apply for the above course, you must first register as a member of our centre and CARER EPS Platform.





Sex and intimacy are innate needs of human beings; sex is also an essential element in one's marriage. A healthy sex life in matrimony allows us to enjoy intimacy with our spouse, to release stress and to facilitate our relationship. However, because of influences caused by psychological, family and cultural issues, one does not necessarily enjoy a happy sex life. What do sexual difficulties generally refer to?

- Lack of sex knowledge
- Sexual disharmony
- Emotional distress due to sex life dissatisfaction
- Difficulties in sexual intercourse
- Lack of sexual desire
- Orgasmic dysfunction
- Premature ejaculation
- Erectile dysfunction
- Delayed ejaculation
- Pain during sexual intercourse

Goals

- To compose proposals according to set therapeutic goals to meet the needs of effectively handling service users.
- To deal with effectively handle the occurring sexual distress and sexual dysfunction.
- To facilitate harmony and sexual intimacy between couples.

Targets

Couples with sexual disharmony or sexual dysfunction

Instructor(s): sex therapist recognized by The Hong Kong Association of Sexuality Educators, Researchers & Therapists Limited (HKASERT)

fee: \$5000/4 sessions (in-person)
\$4600/4 sessions (online)

**Each session lasts for 45-60 minutes
(depending on individual situation)**

- Drop-in's are not available.
- To apply for the above course, you must first register as a member of our centre and CARER EPS Platform.



Parent - Child-Aromatherapy-Massage

SEN children are either under- or over- sensitive regarding sensory integration, which consequently affects their learning, emotions and social life. Through the parent-child learning of aromatherapy massage techniques, participants are encouraged to give massage at their homes, which promotes the development of brain and nervous system of the child. Furthermore, it is conducive to placating the child's emotions and enhancing parent-child relationship.

Targets

SEN children and family

Instructor(s): aromatherapist from International Federation of Aromatherapists (IFA), UK

fee: \$3000/4 sessions

Notes: ■ Aroma massage oil is provided in every session
■ The therapy content is designed according to the child's specific needs

Each session lasts for 45 minutes

- Drop-in's are not available.
- To apply for the above course, you must first register as a member of our centre and CARER EPS Platform.



Centre for Children with
Special Educational Needs

Charis Parent Integrated Service Centre

Marriage and Family Therapy

Professional
services &
training

Family Therapy

Targets

**individual or
family member in need**

While the impact of family in our life is inevitable, we are casting influences on our family at the same time. The behavioural model of family regularly affects one's behaviour and performance; personal issues may only be signs of a problem. Consequently, family therapy does not only resolve personal difficulties but deep seated ones within the overarching family system.

Depending on the situation of service user and his/her family, the therapy offers help not only by employing Family Systems Theory but also psychological testing and Cognitive-Behavioral Theory if necessary. Meetings with another member of the family may be required during the process.



Marriage Therapy

Targets

Married couples

Every marital relationship is unique; it is inherently dominated by such aspects as personalities, background and values held by the couple. After getting married, each partner has his/her own experience, growth and transformation. In the course of time, hardship and disharmony appear, followed by the feeling of disappointment about one's spouse or oneself, the sense of helplessness and even the idea of giving up.



Instructor(s) : Master in Christian Marriage and Family Therapy

Family Therapy Fee: \$700 - \$900per session (1 person)
\$900 - \$1200per session (2 persons or above)

Marriage Therapy Fee: 6 sessions for \$3600 - \$4800

Notes: Each session lasts for 50 minutes long (1 person);
75-minute long (2 persons or above and marriage therapy)
The fee varies according to the experience and qualification of the therapist

■ **Drop-in's are not available.**

■ **To apply for the above course, you must first register as a member of our centre and CARER EPS Platform.**



TPBCSS



A shelter for carers, Mama & Papa's Club provides a flexible and comfortable resting space. In the Club, carers of SEN children are motivated to maintain their own social network and connect with their peers. The Club also creates an opportunity for carers to take the lead and offer support, allowing them to regain confidence and time, to develop personal talent and to take notice of their own mental health.

Members' benefits:

- Borrowing rooms & such facilities as board games, illustration and iPad, etc.
- Courses jointly held with "Seasonal Highlight" (directed by the Club members)
- Themed monthly gatherings and seasonal PAPA fun day
- Various members' exclusive zones
- Learning support for SEN children and carers' skills learning workshop
- Emotional support counselling for carers

Carers are welcomed to confide themselves with each other and lighten the pressure of taking care of children

Time: please contact us and make an appointment via phone call





Centre for Children with Special Educational Needs

Charis Parent Integrated Service Centre

Know more about us via the following clips:



3 Major Services and Facilities



Carer EPS Platform



Our emphasis on the SEN community



OPEN HOUR

Mon 2pm - 6pm

Tue - Thu 10am - 6pm

Fri 2pm - 8pm

Sat 9am - 6pm

SUN & Public Holidays Closed

2656 6680

G Floor, Heng Cheong House,
Fu Heng Estate, Tai Po



TPBCSS
www.tpbcss.org

2656 2220

senc@tpbcss.org